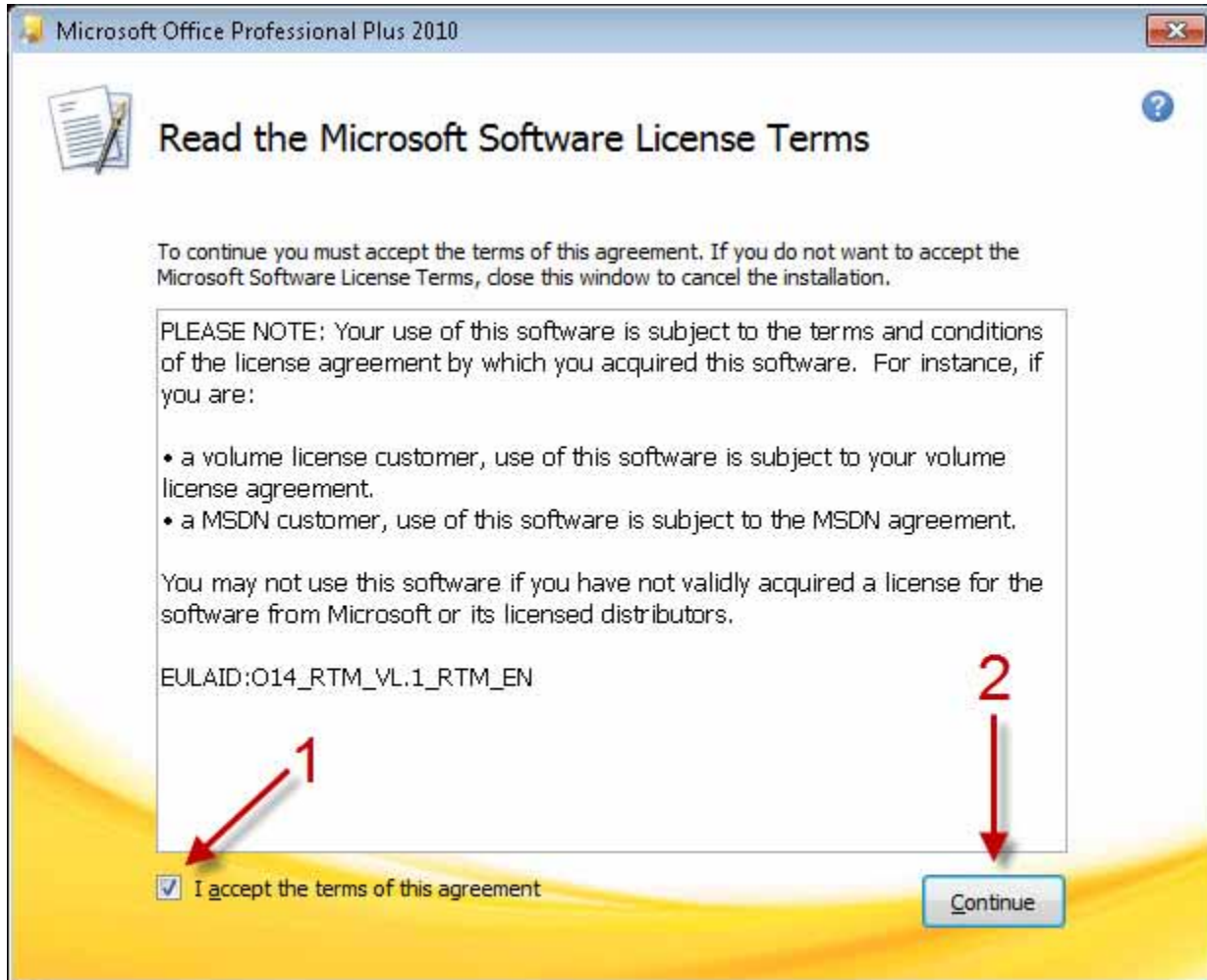


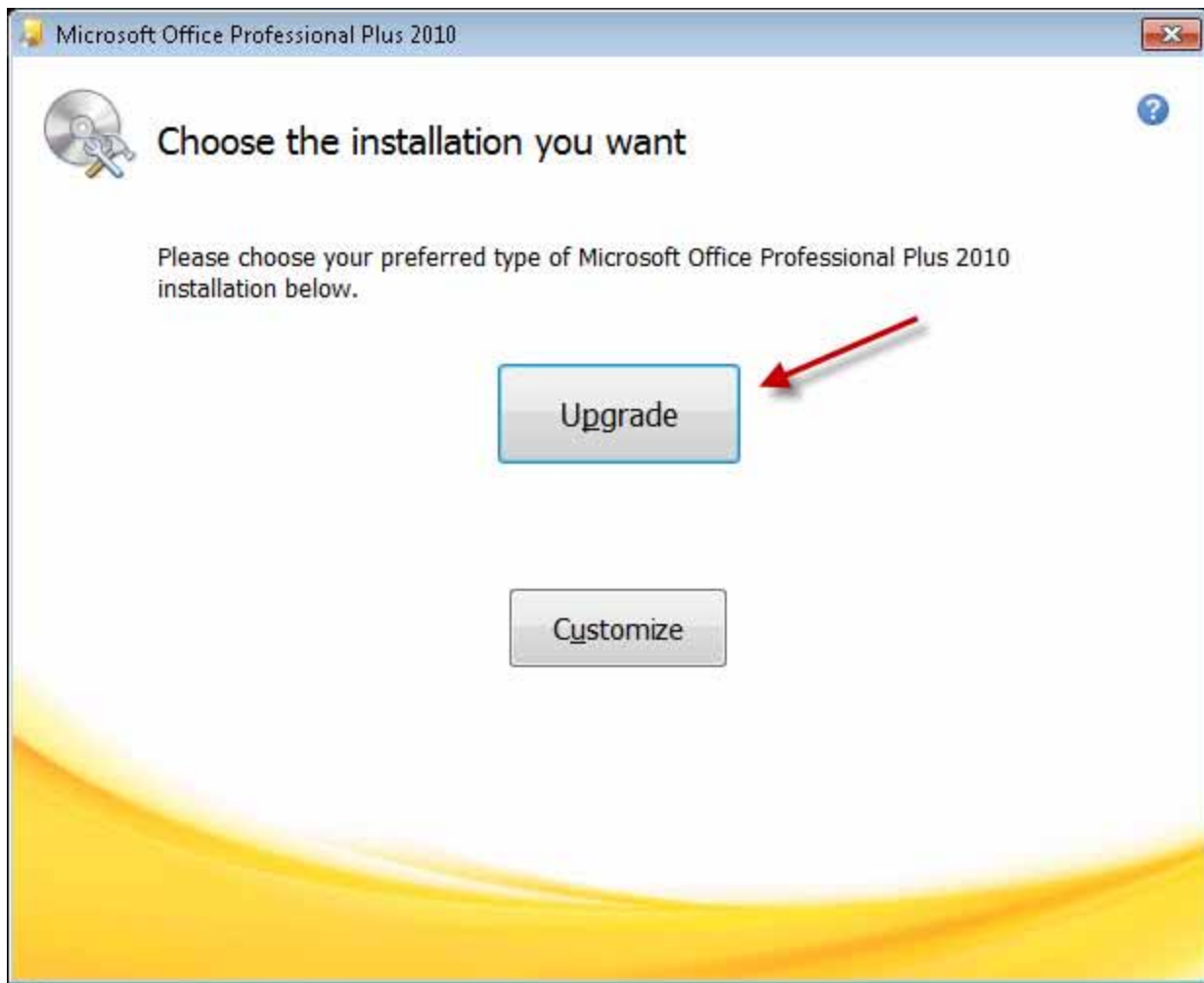
Microsoft Office Professional Plus 2010 Installation Instructions - CWRU Software Center

PLEASE PRINT OR READ THE INSTRUCTIONS BEFORE STARTING THE INSTALLATION. IF YOU DO NOT SEE THE MAIN INSTALLER WINDOW, CHECK FOR IT UNDER THIS WEB BROWSER WINDOW.

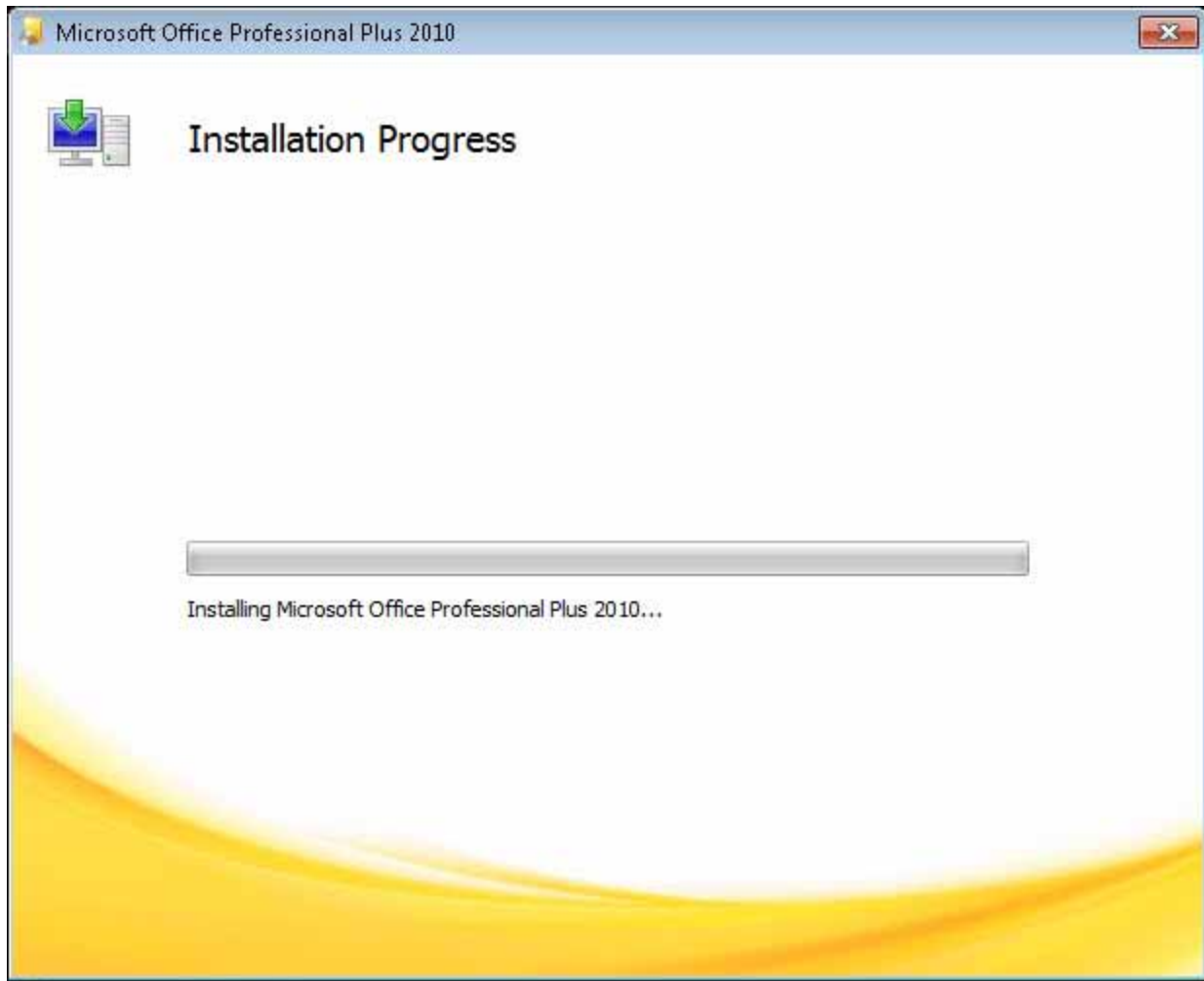
Please follow the illustrated instructions below to install Microsoft Office Professional Plus 2010.



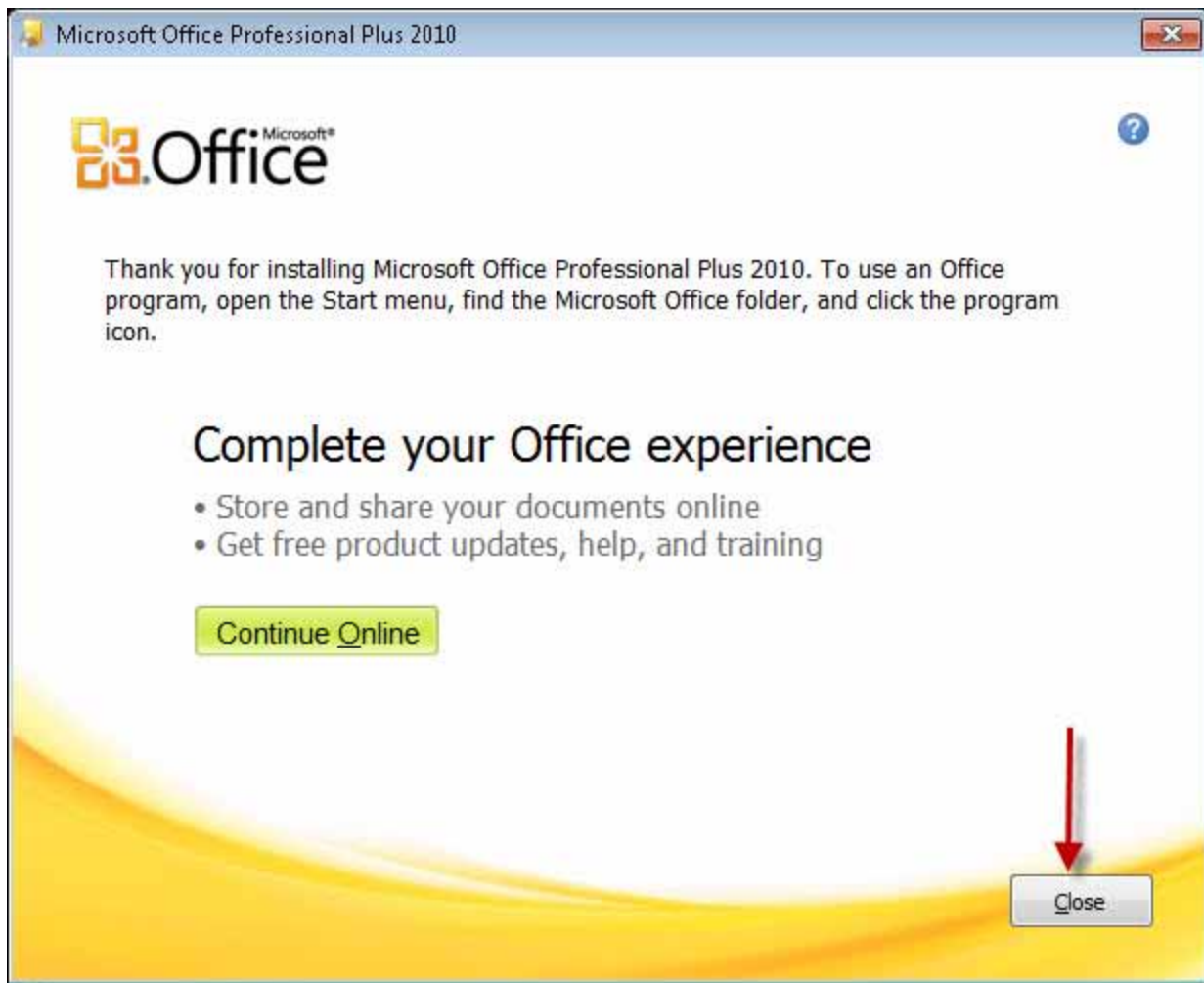
Check the "I accept the terms of this agreement" box and press "Continue" to continue.



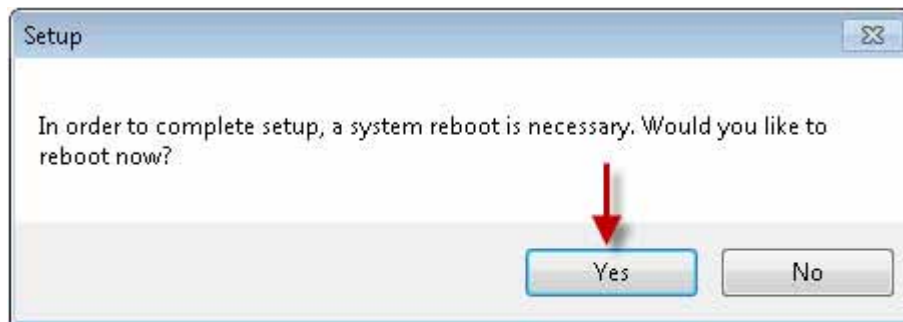
We recommend using the easy install method by clicking on "Upgrade" if you have a previous version of Office installed. If you do not have a previous version of Office installed, the "Upgrade" button will be replaced by an "Install" button, which should be pressed for easy install. Advanced users may press "Customize" to select installation directories or choose which Office features to install.



Microsoft Office Professional Plus 2010 is being installed. Please wait...



Microsoft Office Professional Plus 2010 is installed. Please press "Close" to exit the installer.



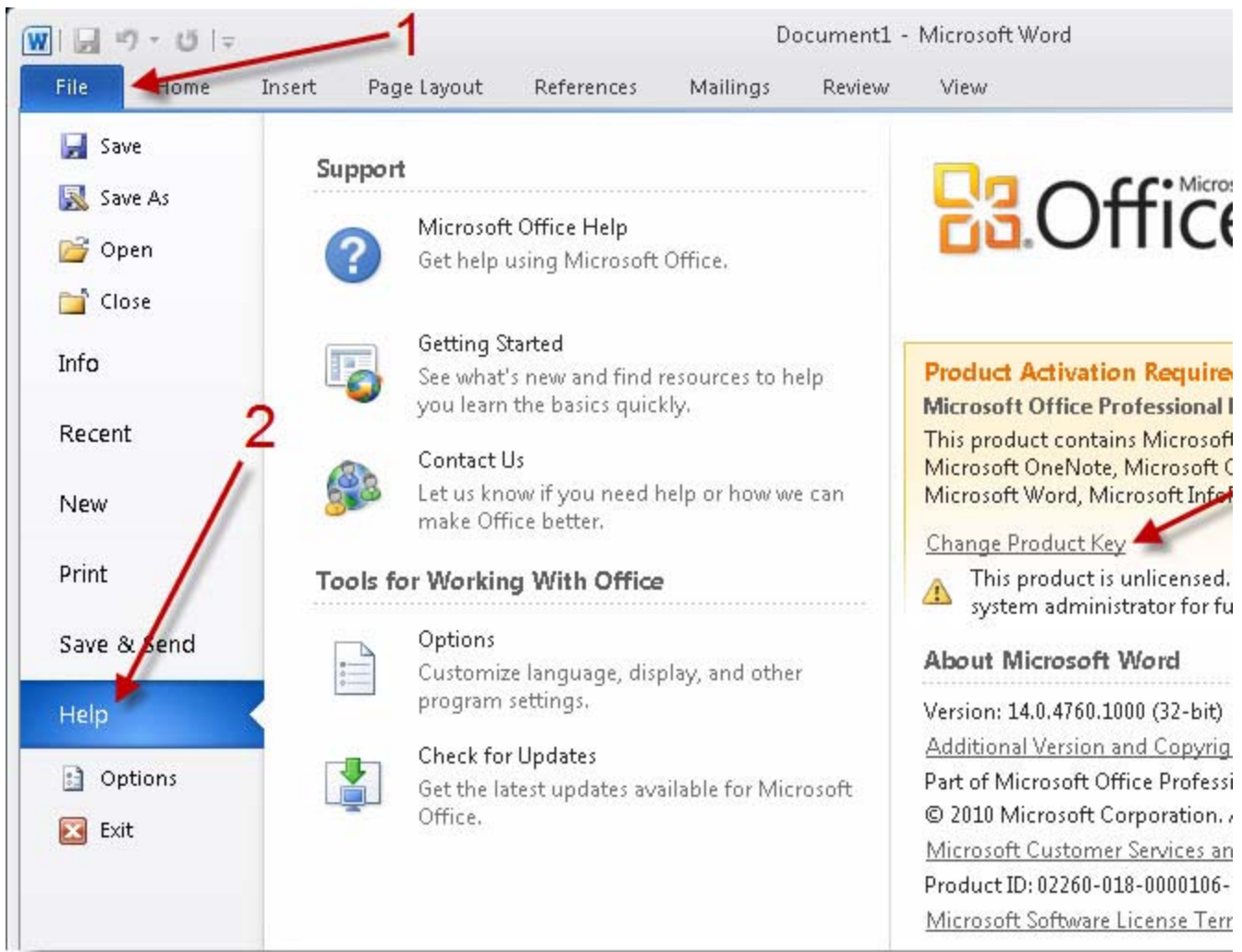
You may get a message to reboot your system after the installer exits. Please allow this by pressing "Yes"



The first time you run an Office program you will be prompted to choose an update policy. We recommend choosing "Recommended Settings". Press "OK" to continue.

IMPORTANT ACTIVATION NOTE

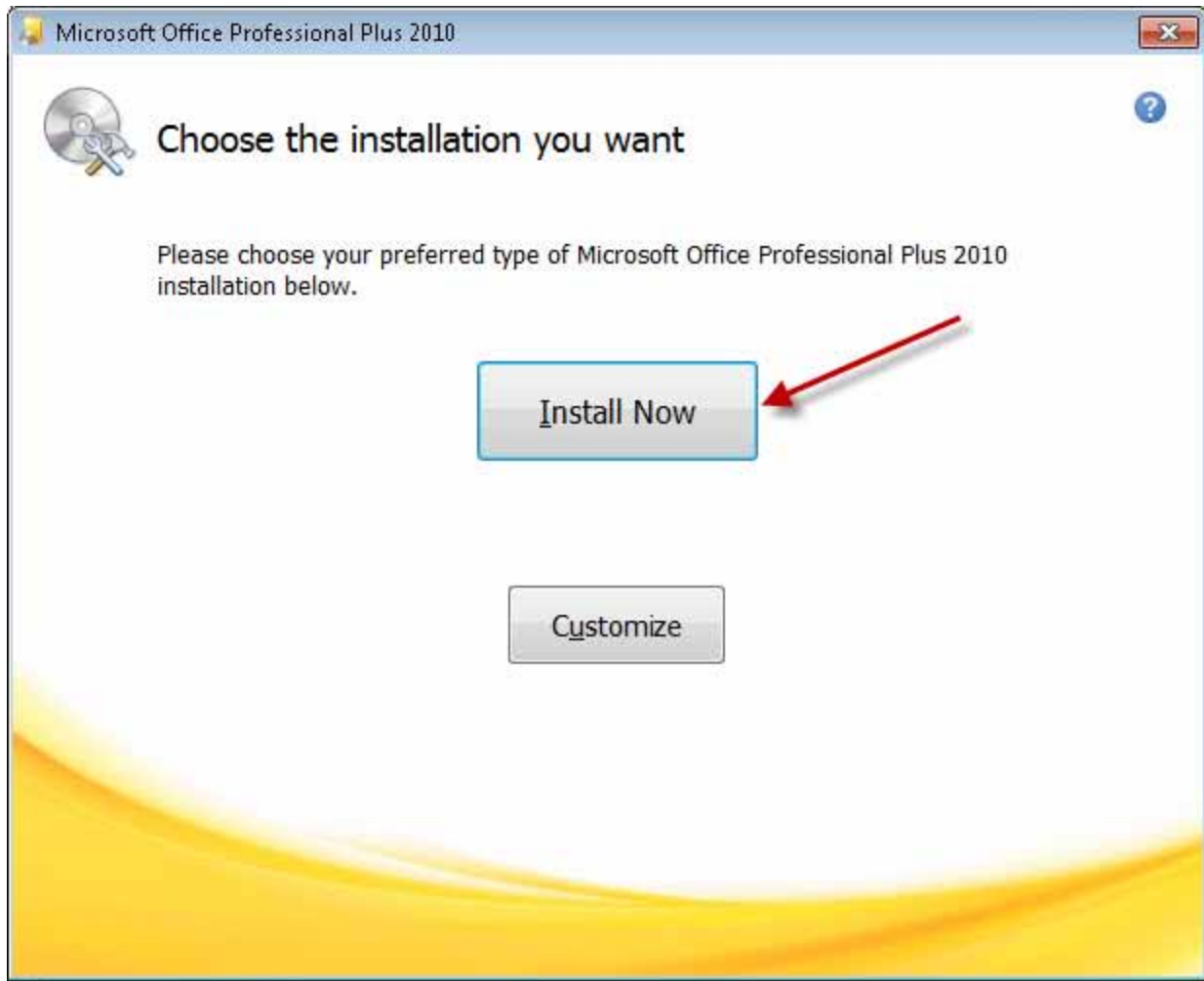
If you have a new computer it may have "Microsoft Office Starter Pack" preinstalled, which is indicated with a clover leaf orange icon in your start menu. Do not use that icon to start Office 2010. Instead, click on the Start Button and then All Programs. Scroll down until you see a "Microsoft Office" folder. Open that folder and start any of the Office 2010 programs. At that point, follow the activation instructions below to activate your product.



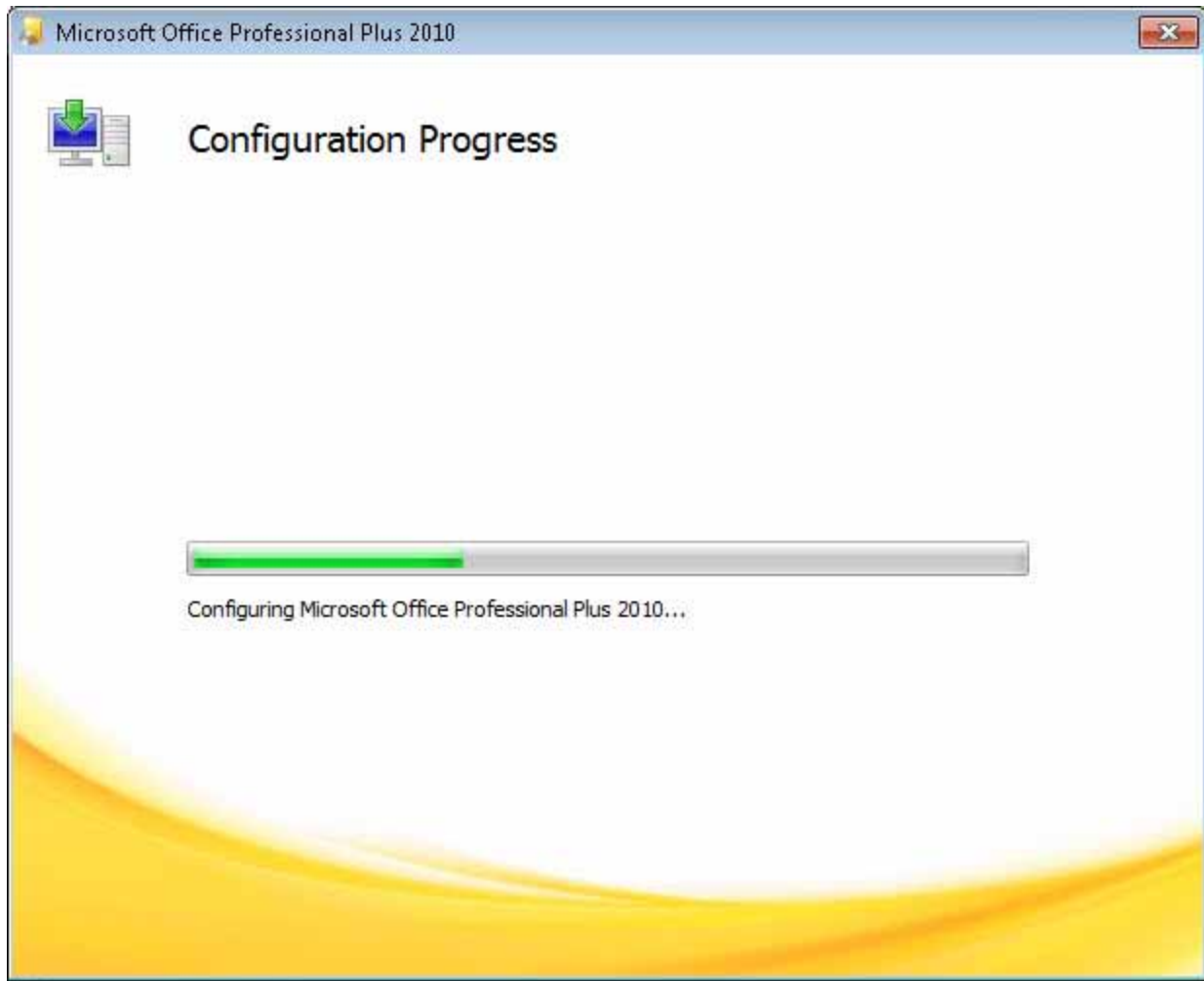
Microsoft Office Professional Plus 2010 must be activated. To activate the product, click on "File" and then "Help"



The 25 character Product Key was emailed to your CWRU email account after you downloaded the product. Please enter the key and press "Continue".



To start the activation process after the key is entered, press "Install Now".



Product activation is in progress, please wait...



Activation is complete. Press "Close" to exit and restart any open Office 2010 programs.

For help in resolving installation or activation problems, please contact the CWRU Help Desk at 368-HELP