

Mac OS 10.6 Snow Leopard Suite Installation Instructions

Please note that this document is a copy of the html document that is displayed by the installer. You must download the installer and use the html document displayed by the installer to complete installation and to download the additional files. This document is presented as a convenience to study the installation instructions before you actually download the product.

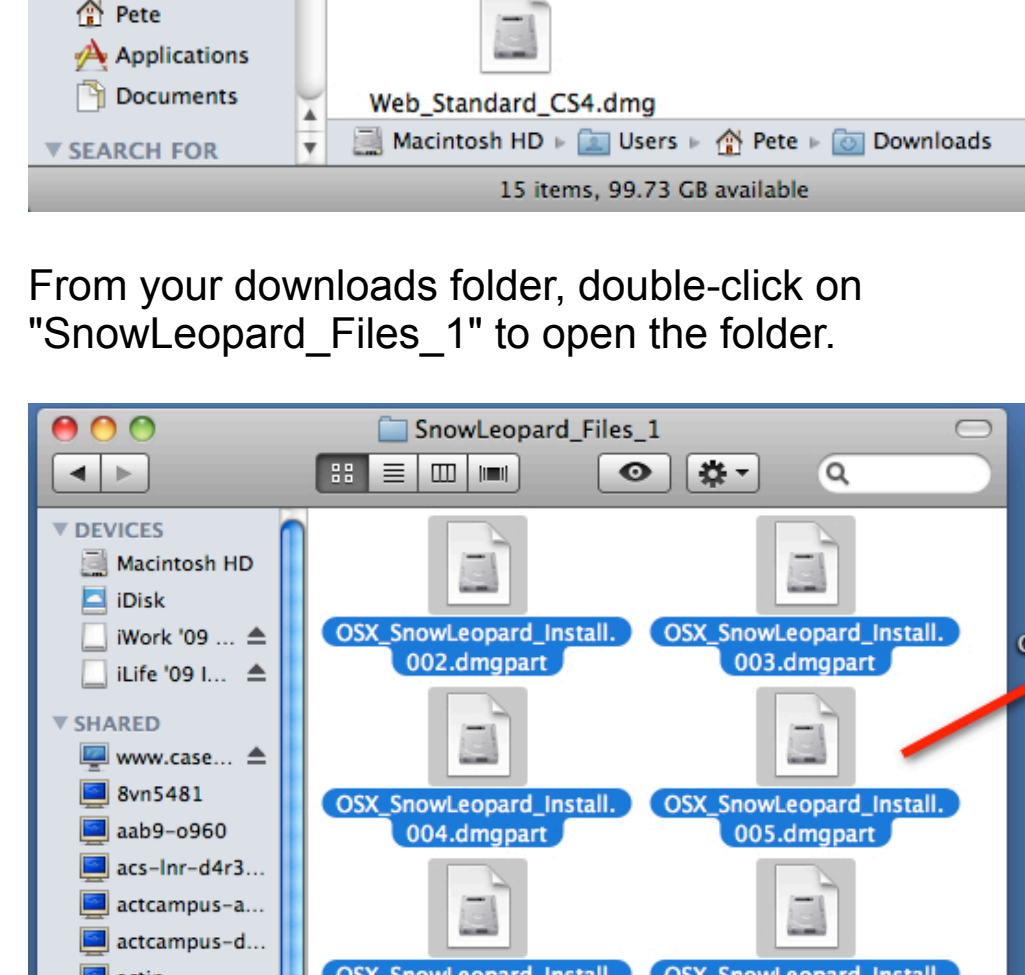
The installer will copy up to three folders to your desktop, depending on the products you selected. If you chose "Easy Install", all three folders will be copied. The folders on your desktop are one or more of the following: "OS 10.6 Snow Leopard", "iWork '09" and "iLife '09". In order to install each product additional downloads and steps are required. Please follow the detailed instructions below to complete installation of each product.

Mac OS X 10.6 Snow Leopard Installation

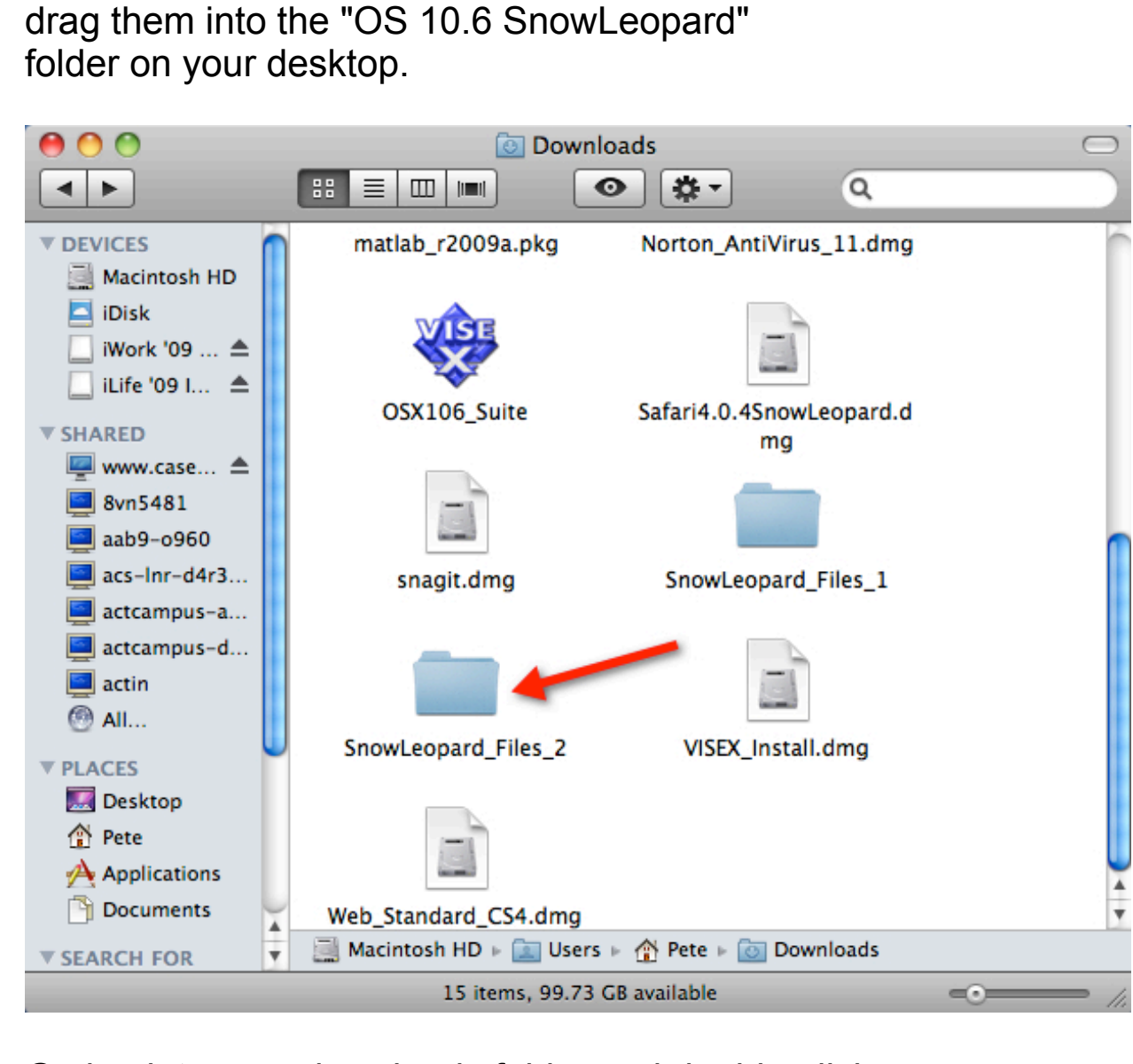
Installing Mac OS 10.6 Snow Leopard requires two additional downloads. Please click on each link below (These are dummy links, the document displayed when you run the Software Center installer will have active links):

[Snow Leopard Additional Files 1](#)
[Snow Leopard Additional Files 2](#)

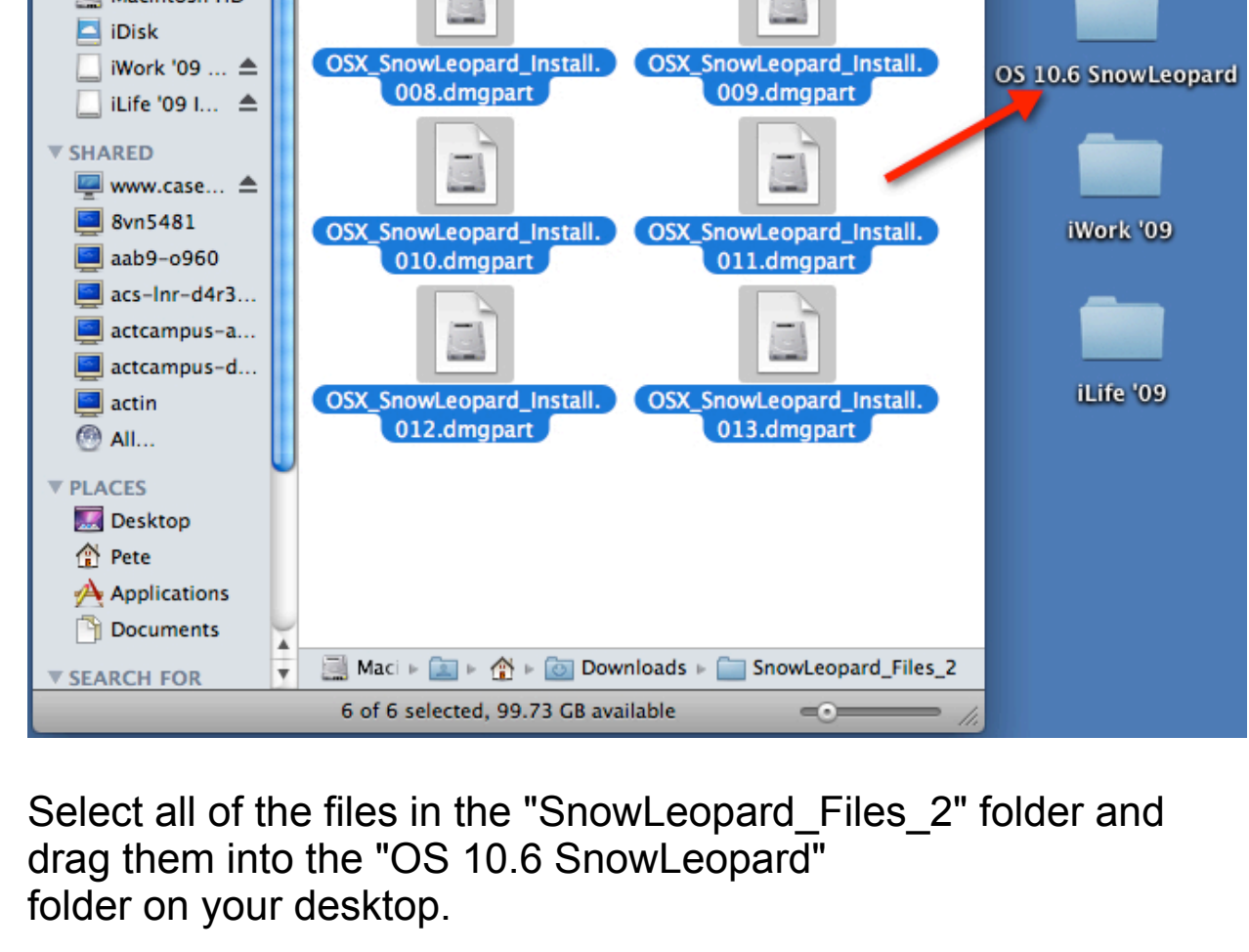
If you are using the Safari browser, the files will automatically be decompressed and two folders containing additional OS X 10.6 install files will be created in your "Downloads" folder.



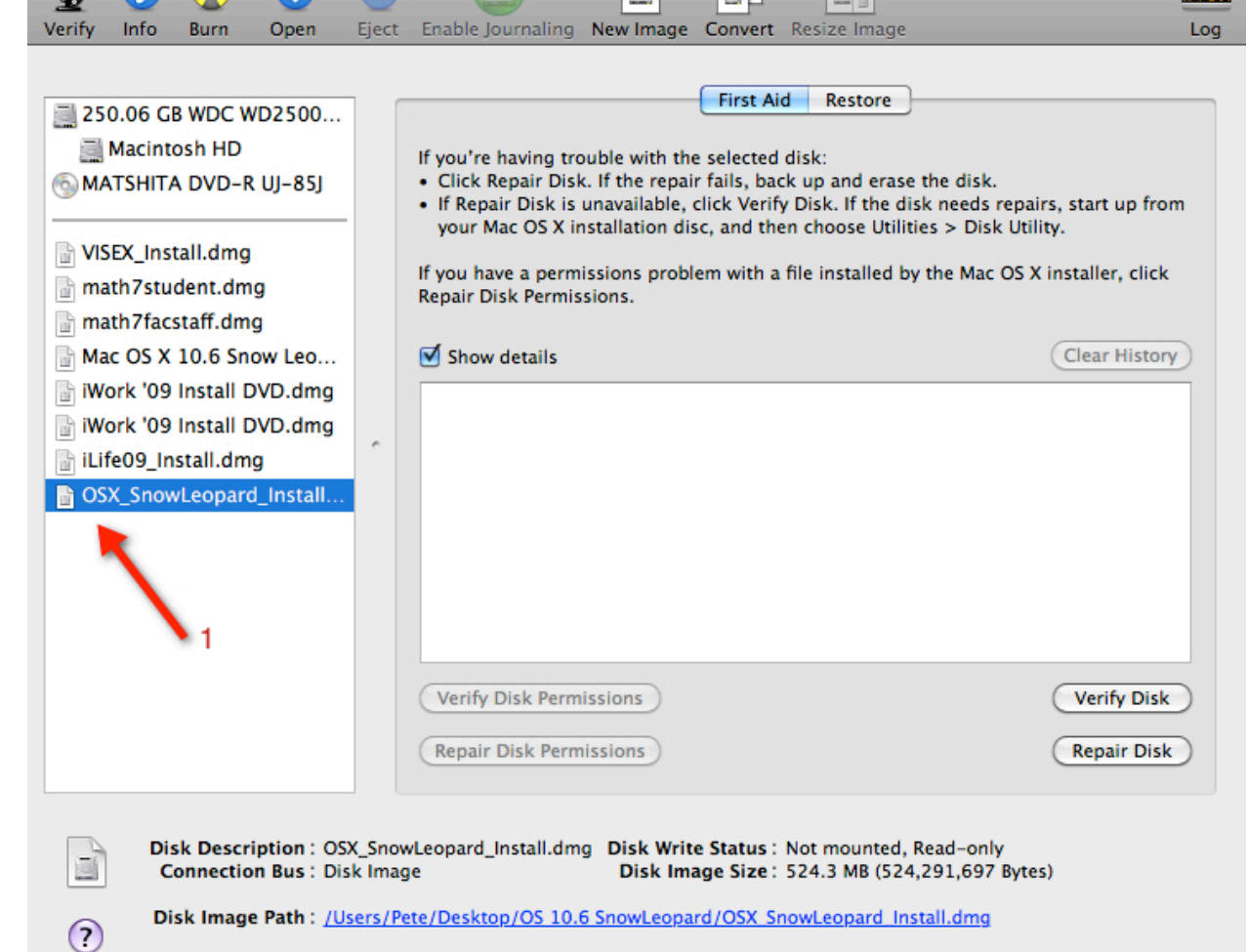
You may click on the illustrated icon on your downloads window to open the downloads folder and show "SnowLeopard_Files_1" and "SnowLeopard_Files_2".



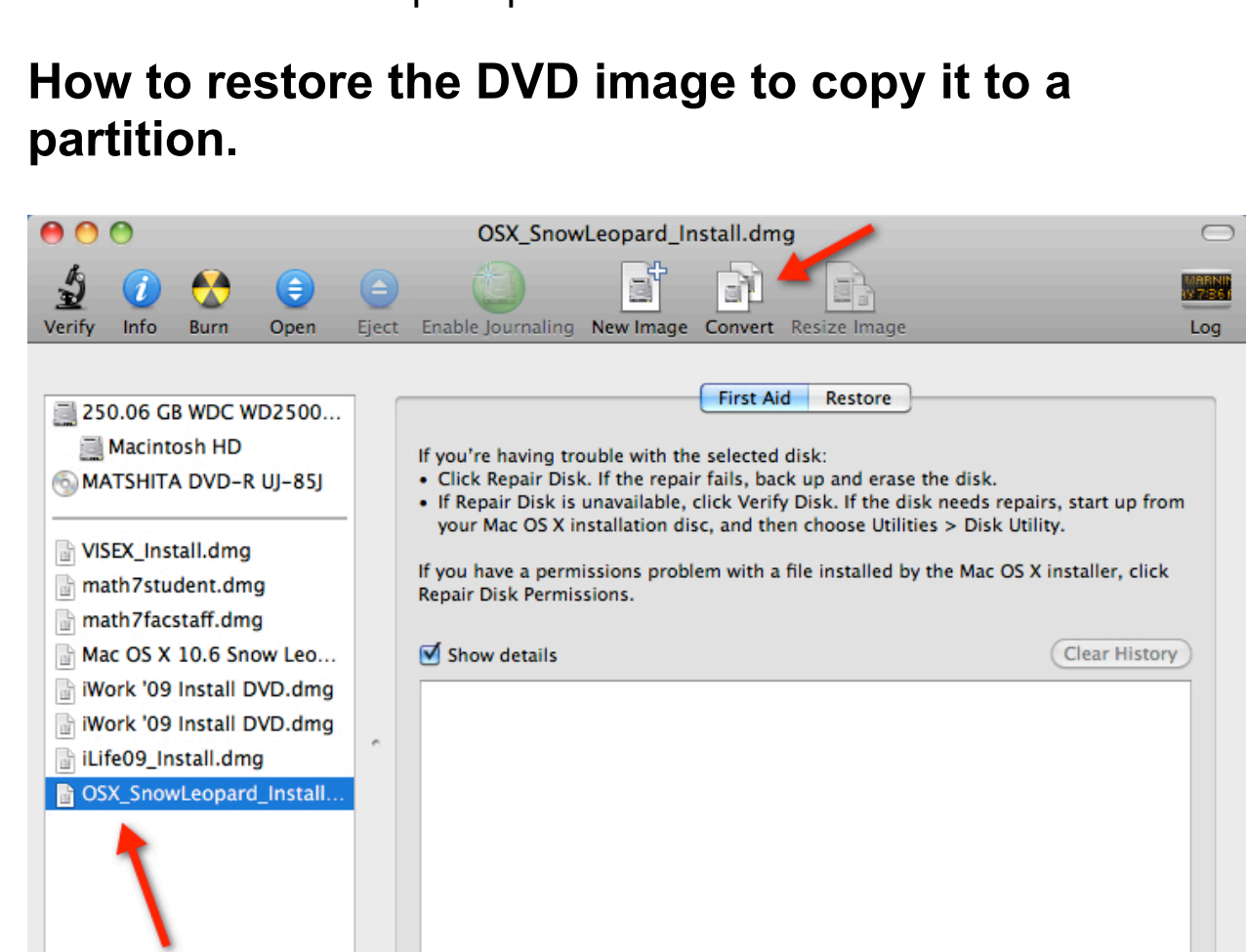
From your downloads folder, double-click on "SnowLeopard_Files_1" to open the folder.



Select all of the files in the "OS 10.6 SnowLeopard" folder and drag them into the "OS 10.6 SnowLeopard" folder on your desktop.



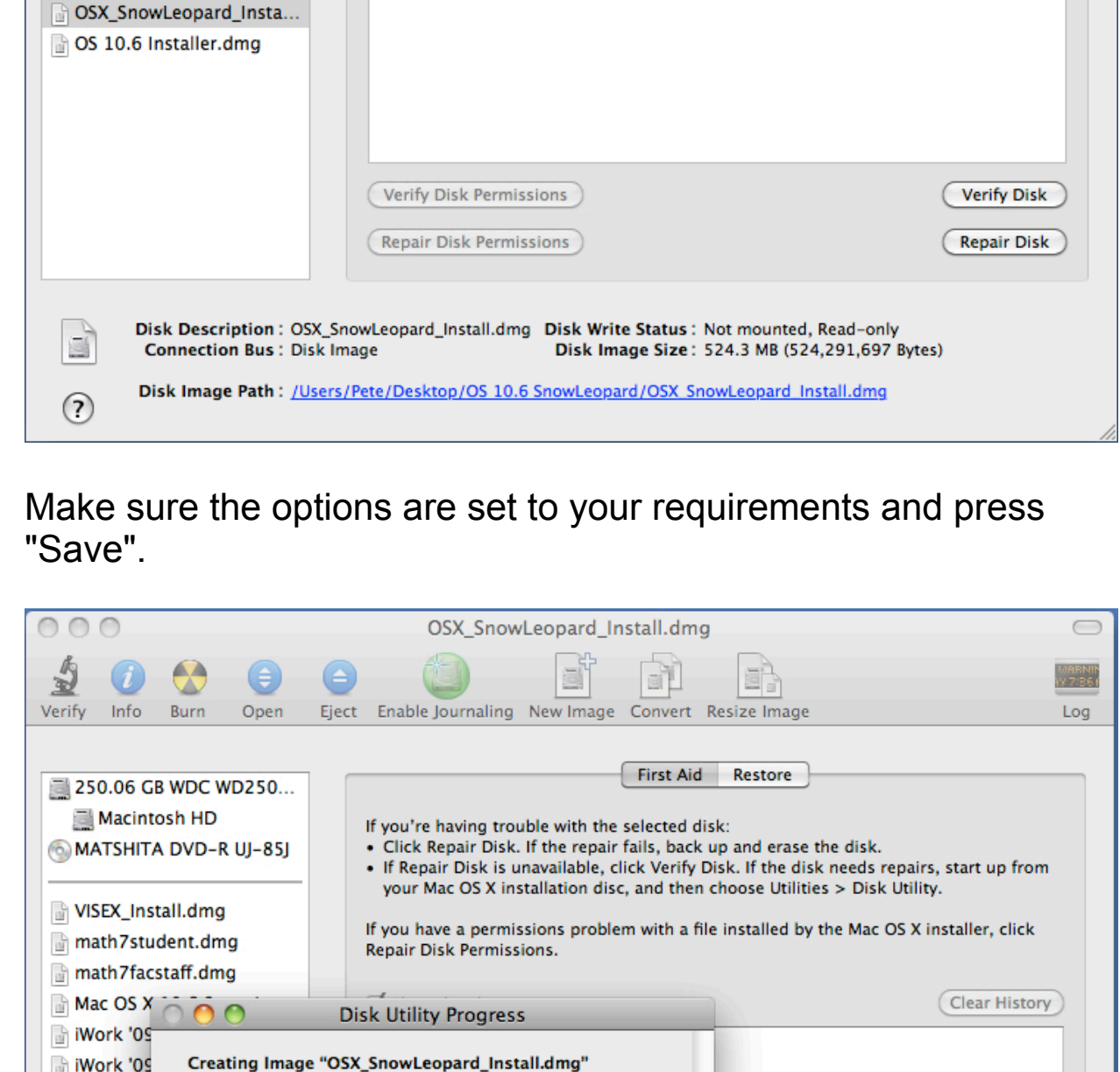
Go back to your downloads folder and double-click on "SnowLeopard_Files_2" to open the folder.



Select all of the files in the "SnowLeopard_Files_2" folder and drag them into the "OS 10.6 SnowLeopard" folder on your desktop.

To install the Snow Leopard upgrade, you must either burn a DVD using a dual layer DVD burner or restore the .dmg image file to another disk partition (either internal or external) that is bootable.

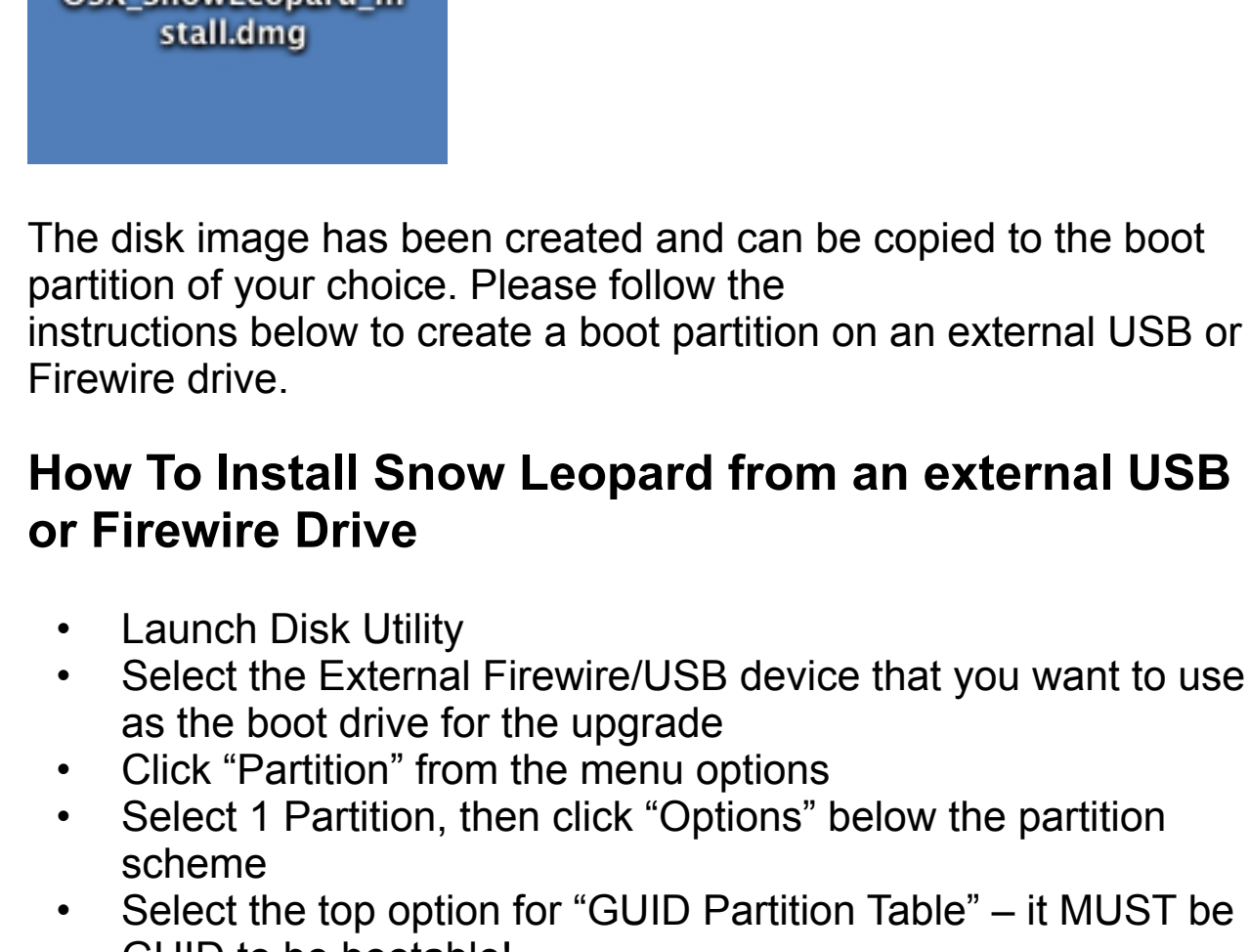
How to burn a DVD



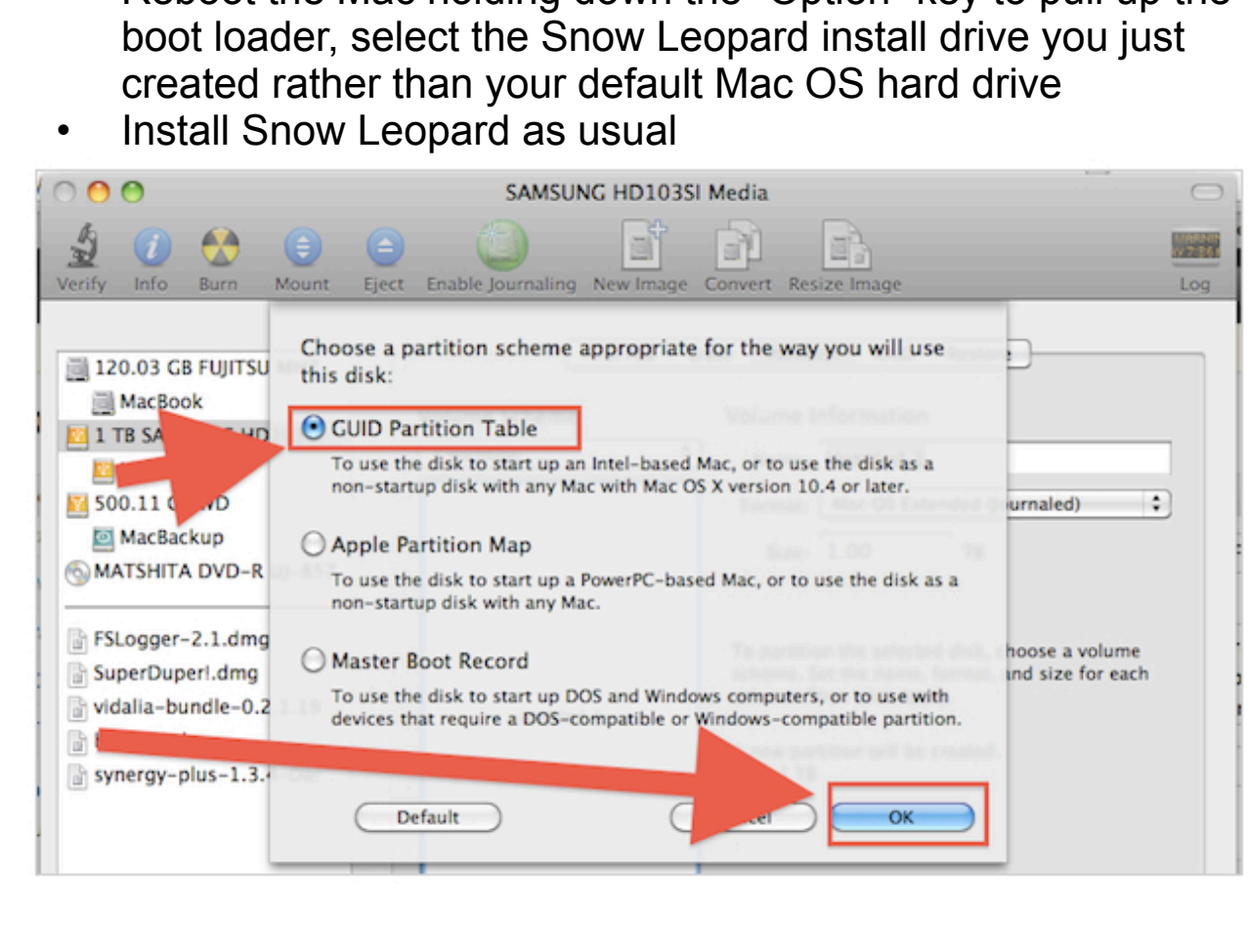
To burn a DVD, open "Disk Utility" and select "OSX_SnowLeopard_Install". Then click "Burn"

Once your DVD is ready, reboot your machine from the DVD and follow the on-screen prompts.

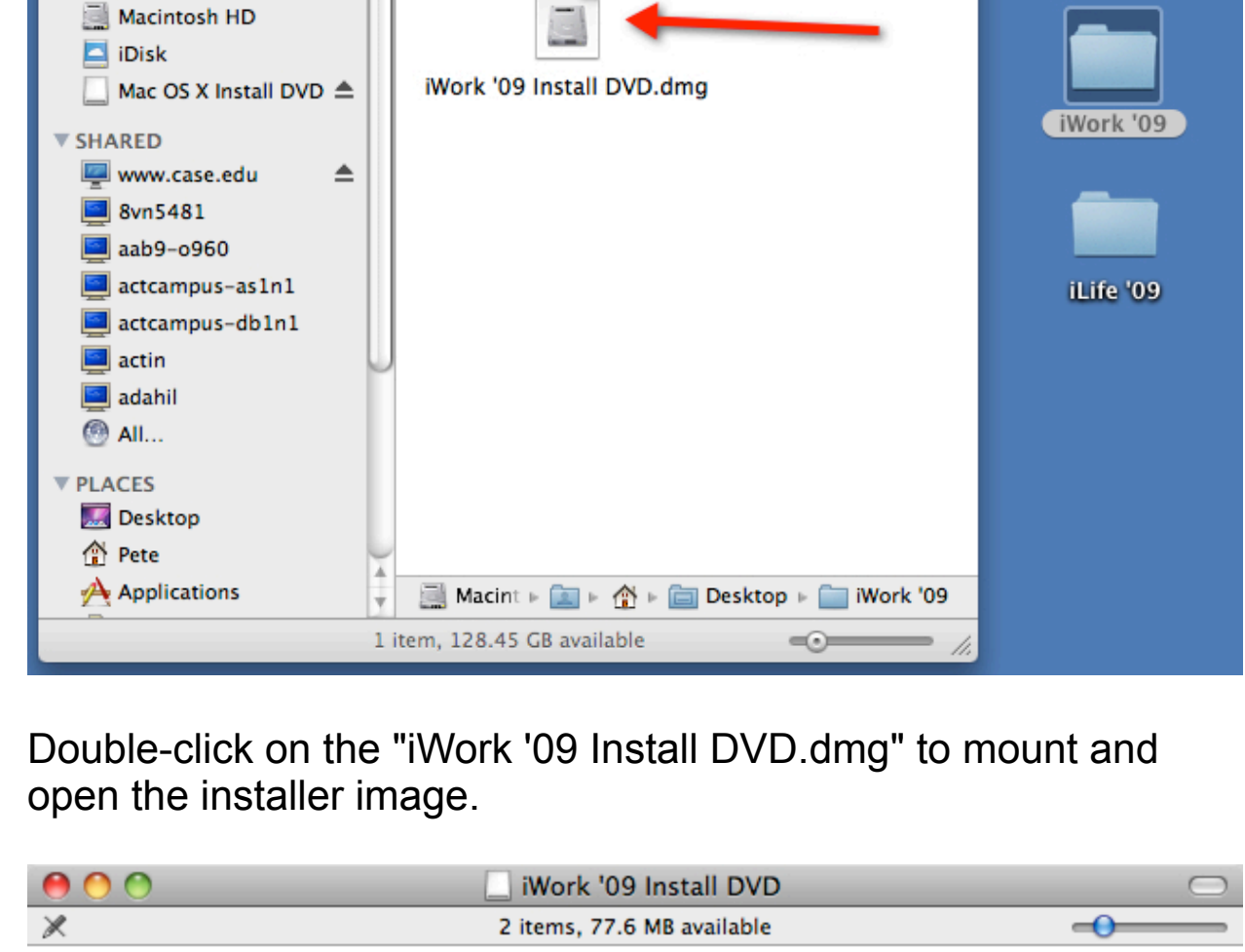
How to restore the DVD image to copy it to a partition.



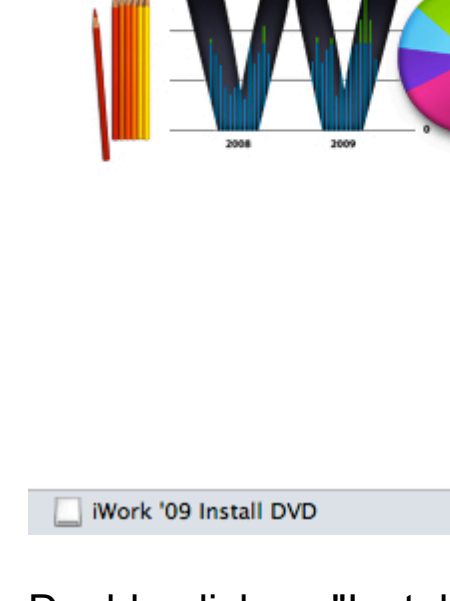
Open "Disk Utility" and select "OSX_SnowLeopard_Install", then click on "Convert".



Make sure the options are set to your requirements and press "Save".



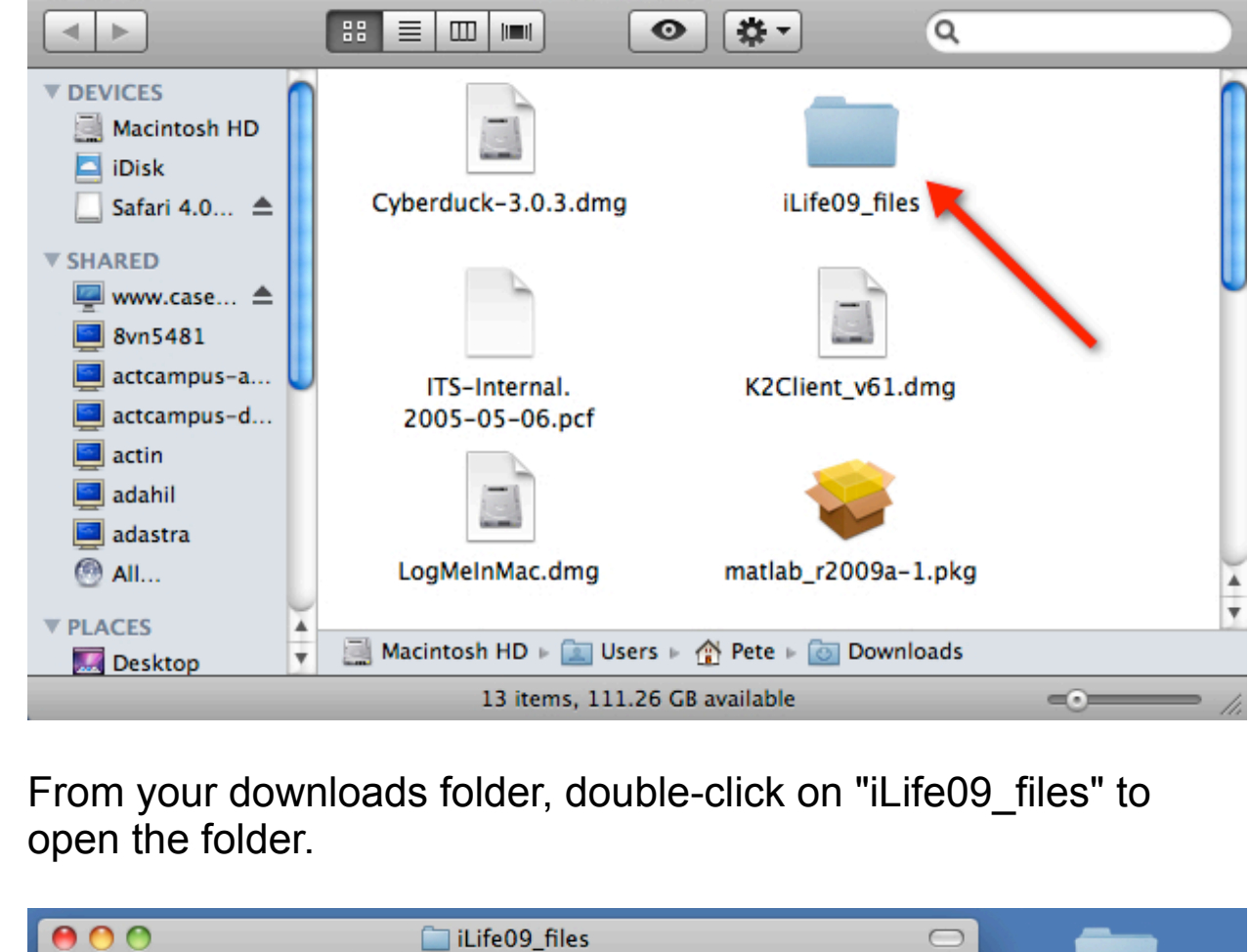
The disk image is being created.... Please wait.



The disk image has been created and can be copied to the boot partition of your choice. Please follow the instructions below to create a boot partition on an external USB or Firewire drive.

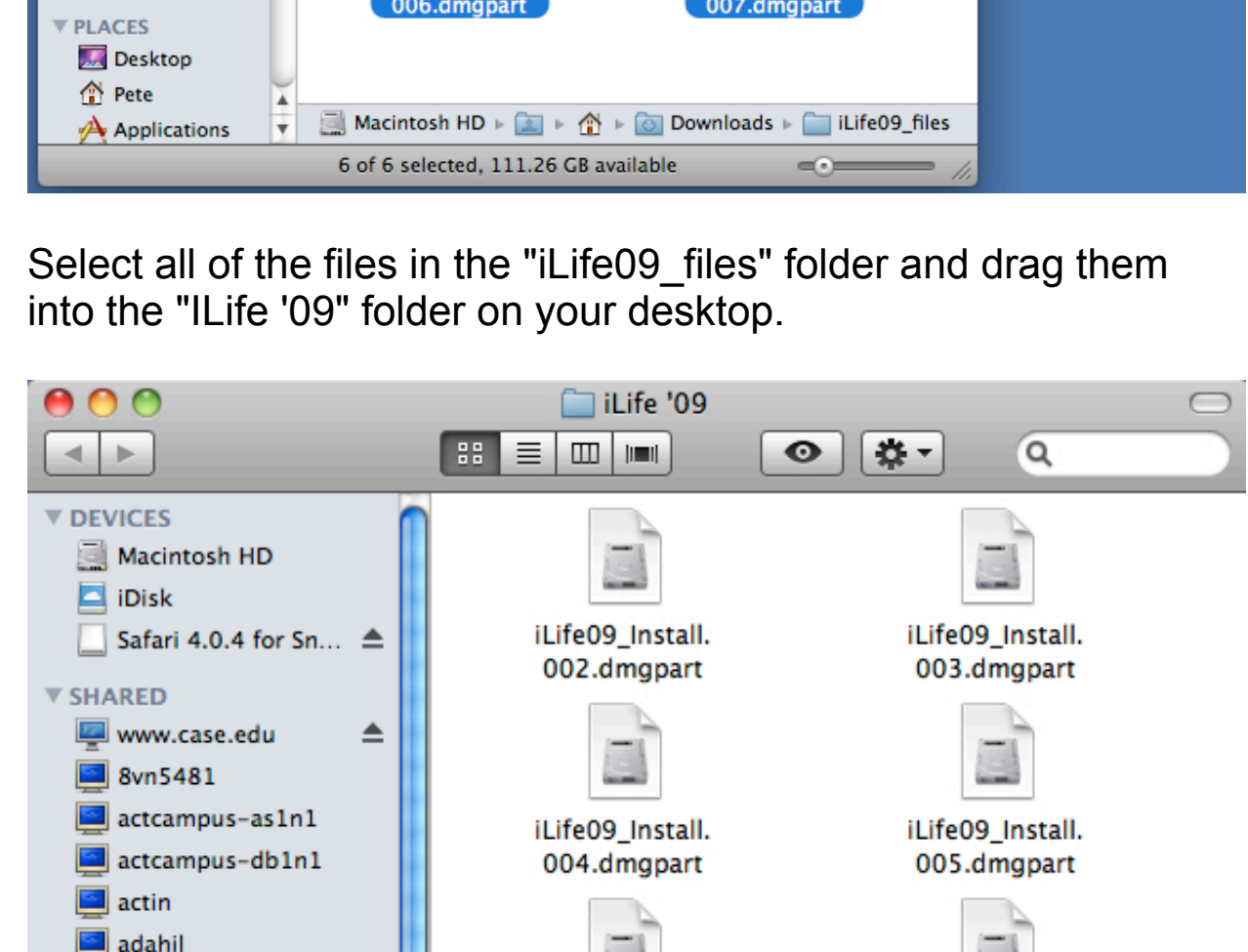
How To Install Snow Leopard from an external USB or Firewire Drive

- Launch Disk Utility
- Select the External Firewire/USB device that you want to use as the boot drive for the upgrade
- Click "Partition" from the menu options
- Select 1 Partition, then click "Options" below the partition scheme
- Select the top option for "GUID Partition Table" – it MUST be GUID to be bootable!
- Click OK to create the GUID partition (this will reformat the drive, i.e. all data is lost)
- Next, click the "Restore" tab within Disk Utility
- Select your newly made Snow Leopard 10.6 Install DVD image and restore this image to the GUID partition you just created
- After the restoration is complete, your GUID partition will now be bootable by Mac OS X
- Reboot the Mac holding down the "Option" key to pull up the boot loader, select the Snow Leopard hard drive you just created rather than your default Mac OS install drive
- Install Snow Leopard as usual

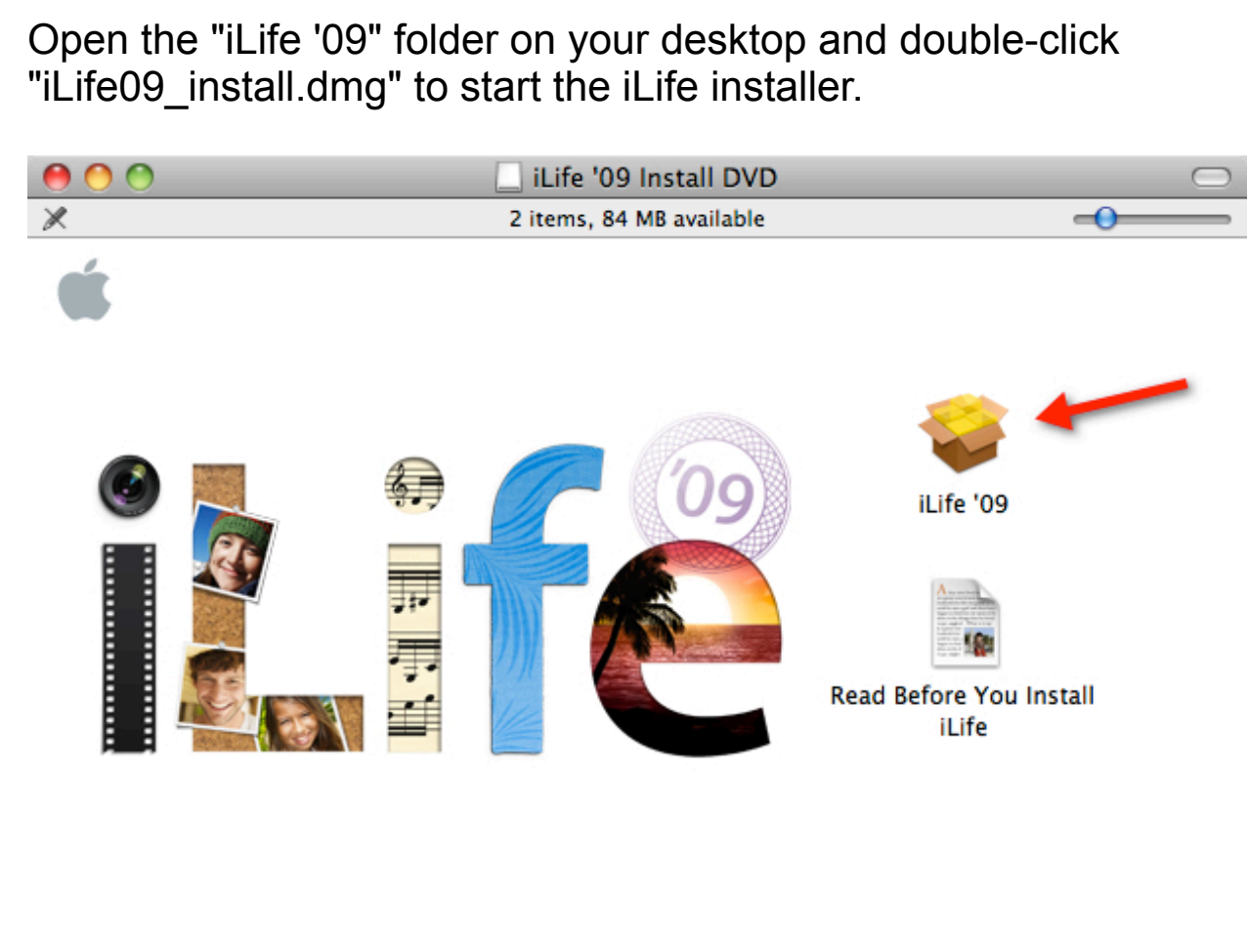


iWork '09 Installation

Double-click on the "iWork '09" folder on your desktop.



Double-click on the "iWork '09 Install DVD.dmg" to mount and open the installer image.



Double-click on "Install iWork '09" to start your iWork installation. Follow the on-screen prompts.

iLife '09 Installation

Installing iLife '09 requires one additional download. Please click on the link below (This is a dummy link, the document displayed when you run the Software Center installer will have active links):

[Download iLife '09 Additional Files](#)

If you are using the Safari browser, the files will automatically be decompressed and one folder containing additional iLife '09 instal files will be created in your "Downloads" folder.

You may click on the illustrated icon on your downloads window to open the downloads folder and show "iLife09_files"

From your downloads folder, double-click on "iLife09_files" to open the folder.

Select all of the files in the "iLife09_files" folder and drag them into the "iLife '09" folder on your desktop.

Open the "iLife '09" folder on your desktop and double-click "iLife09_Install.dmg" to start the iLife installer.

Double-click on "Install iLife '09" to start your iLife installation. Follow the on-screen prompts.