

SAS 9.1.3 Service Pack 4 Installation Instructions

2008-2009 License for Case Western Reserve University

Please carefully read the instructions on this page before continuing with the SAS 9.1.3 installation. It is recommended that you print this page for easy reference during the installation. **SAS INSTALLATION IS STARTING, IF YOU DON'T SEE THE SAS INSTALLER WINDOW, PLEASE LOOK UNDER THIS BROWSER WINDOW.**

PLEASE NOTE: If the installation hangs between 85% and 99% of completion, get the fix from SAS [here](#).

IMPORTANT NETWORK REQUIREMENTS FOR INSTALLING SAS

The main SAS installer runs from a Windows share located on a server that is part of the Case network. Your computer needs to map a drive letter to this share in order to install SAS. To do this, the following requirements must be met:

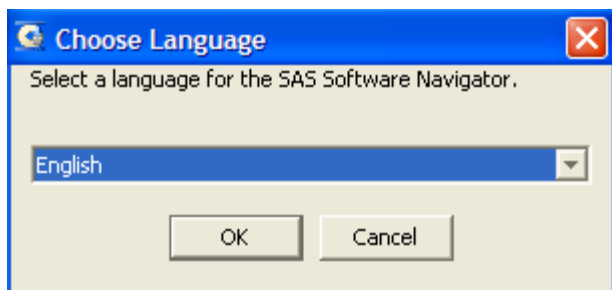
- Your computer must have the "X" drive available for mapping.
- You must be connected to the campus network from a location on campus.
- Firewall settings on your computer may restrict share mapping. Modify your firewall or turn it off to install SAS.
- Security settings on your machine may restrict share mapping. Modify your security settings to allow share mapping.

If you cannot meet the above requirements, and have a laptop computer, we may be able to install SAS for you if you bring your machine to campus. Please send Email to softwarecenter@case.edu to make arrangements for this service.

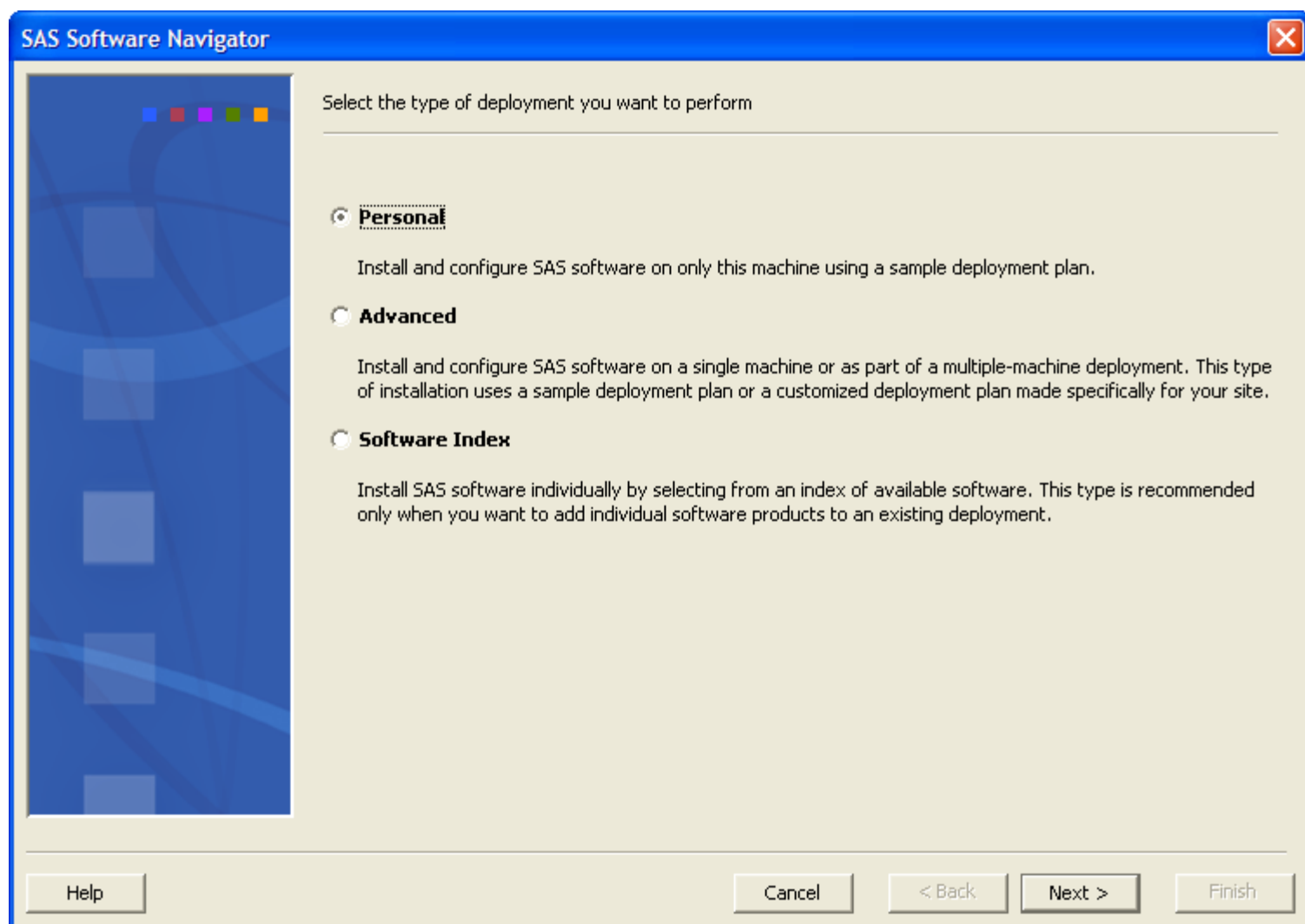
SAS Software Navigator

The instructions and screen shots below will show you how to answer prompts to the SAS Software Navigator. This program sets up the installation parameters for the SAS installer. IMPORTANT: The first installer module that runs is the System Requirements Wizard. Your machine may reboot after this wizard runs. If this happens, you will need to double click on the "SAS Installer" icon on your desktop to restart the installation process once your machine comes back up.

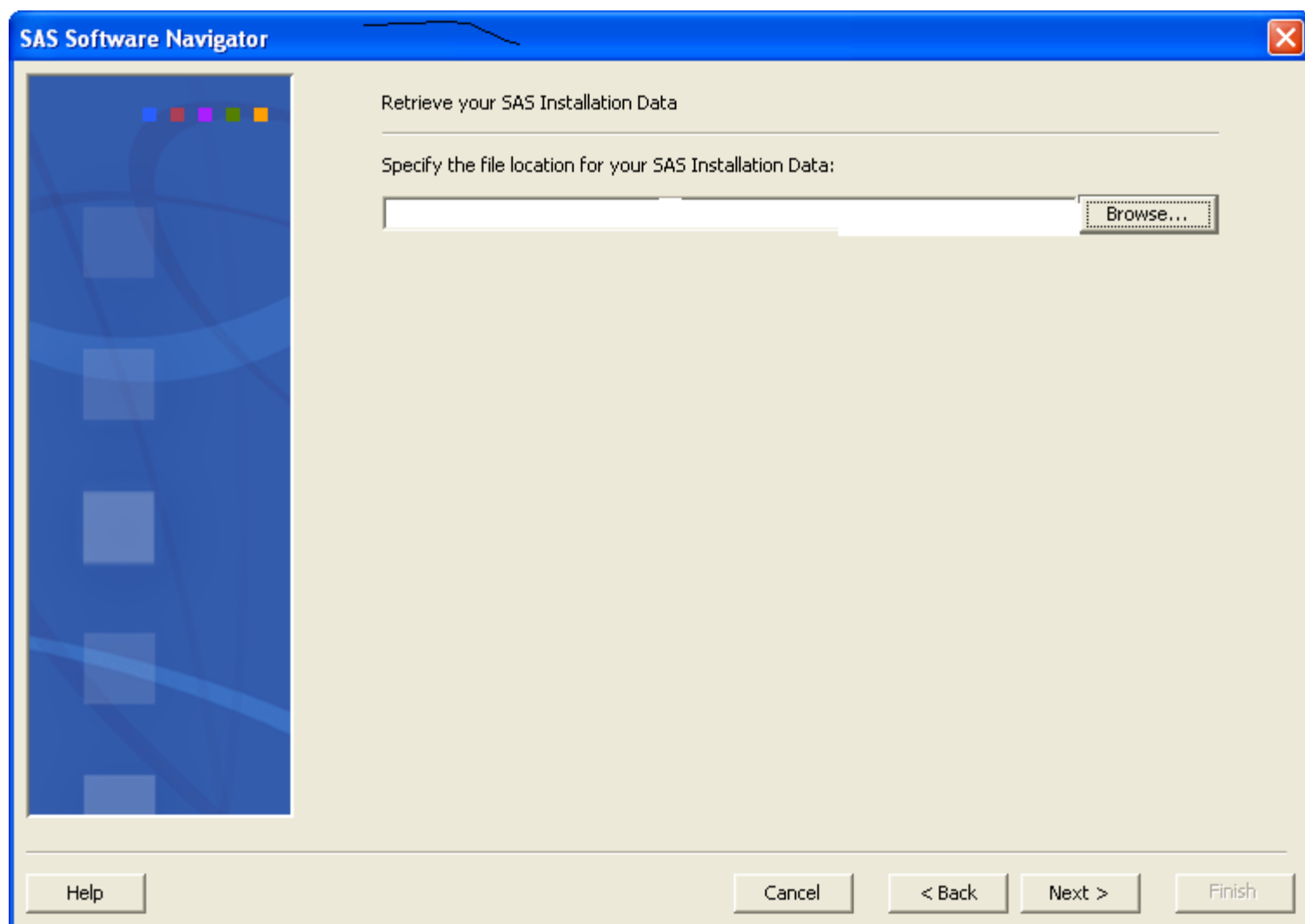
SOFTWARE NAVIGATOR SCREENS



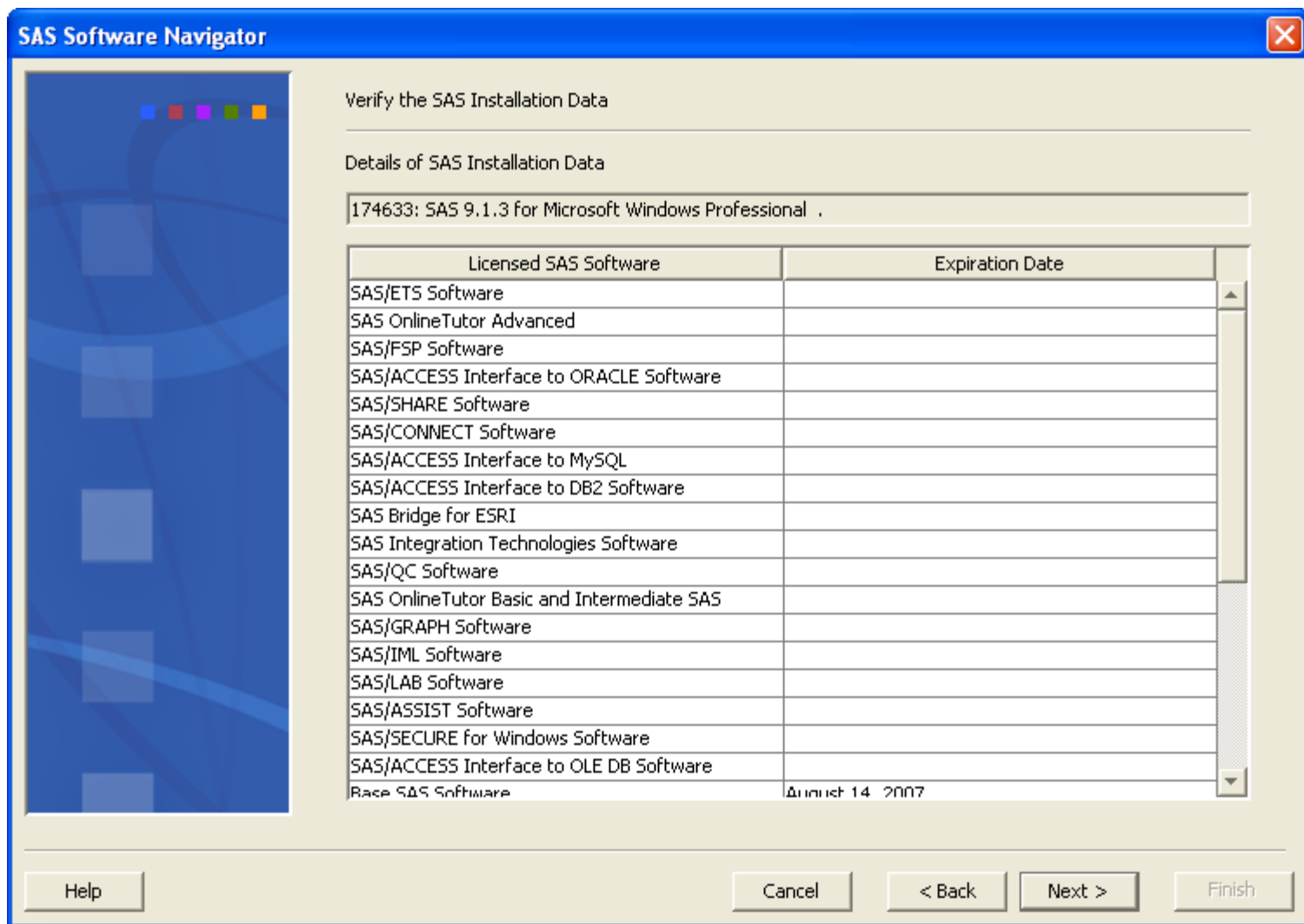
Select the language you would like to use. Press "OK" to continue.



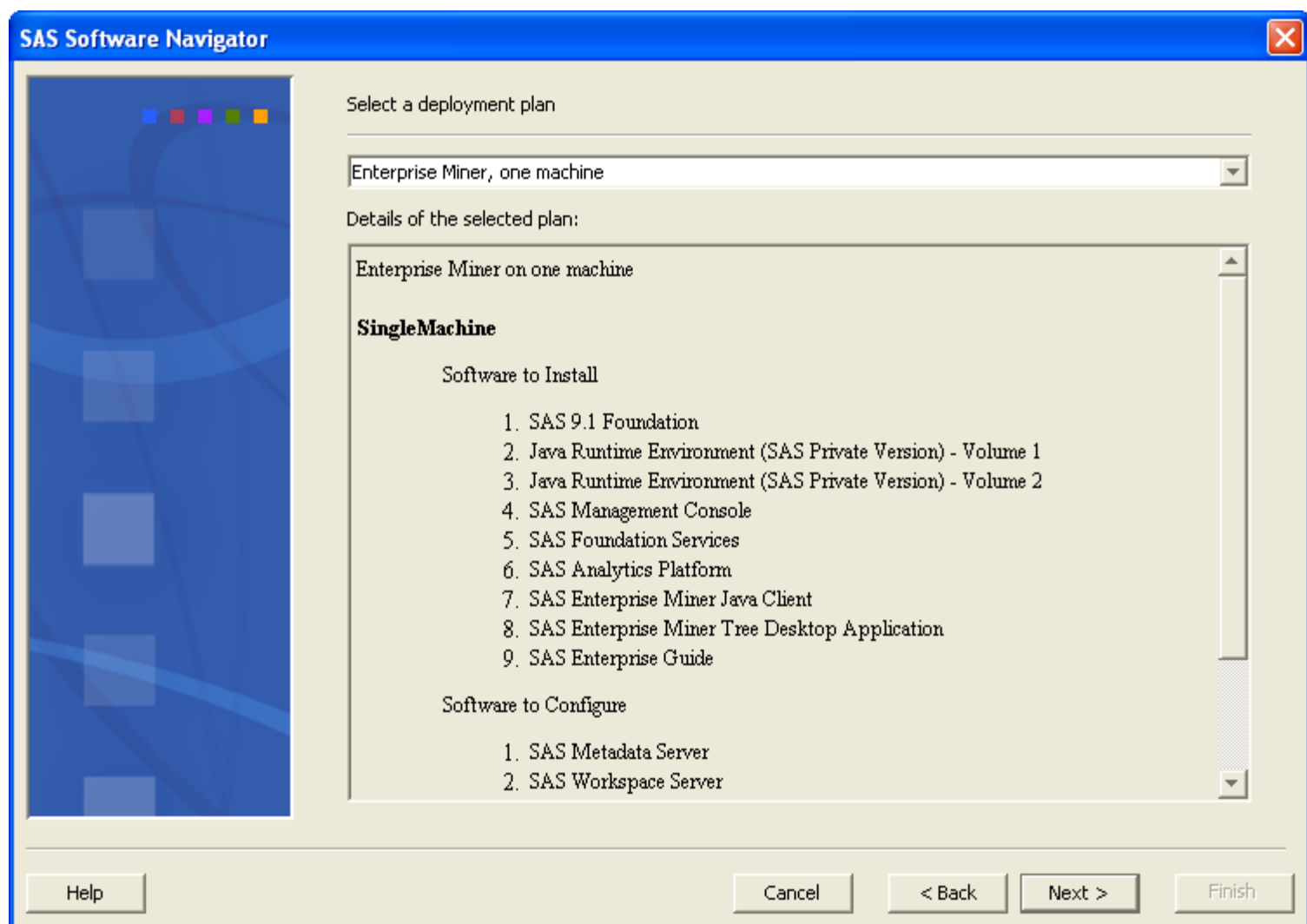
Defaults to "Personal". Please do not change this, making sure that "Personal" is checked. Press "Next" to continue.



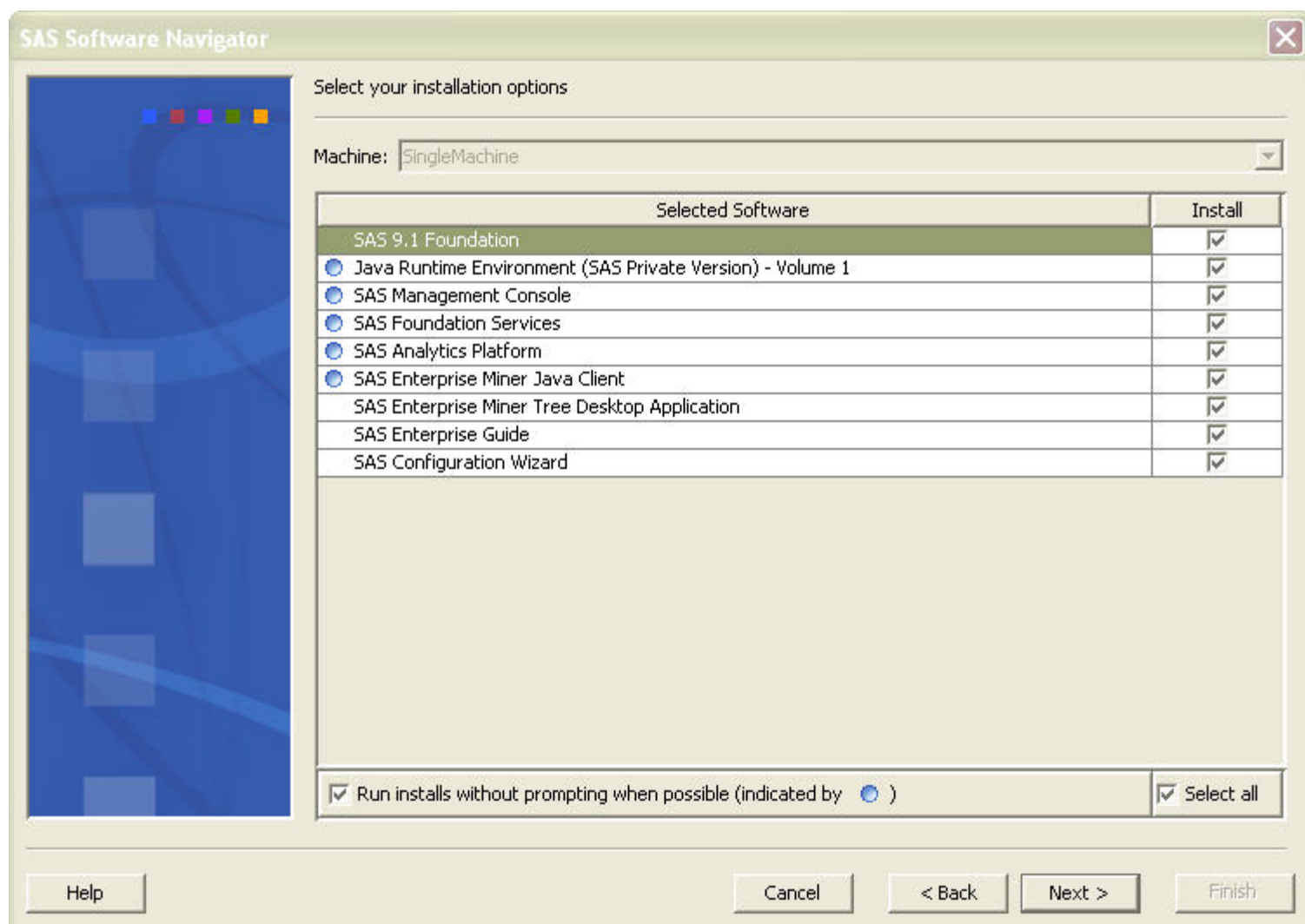
Please browse to the "SAS 2008-2009 License" folder, which was copied to your desktop, to find the SAS license file called "SAS_Setinit2009Win.txt". Press "Next" to continue.



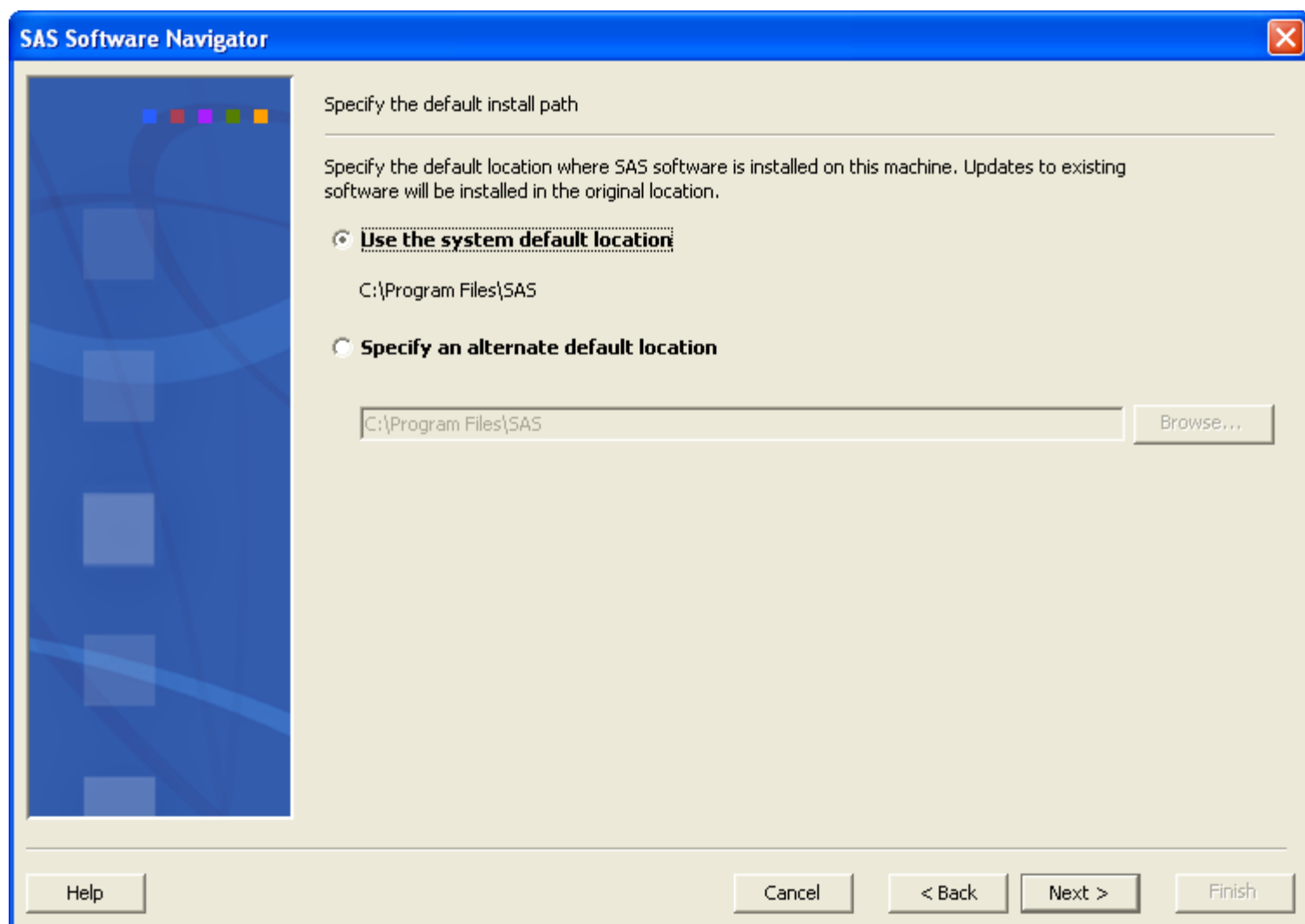
SAS Installation Data verification screen. No action needed, press "Next" to continue.



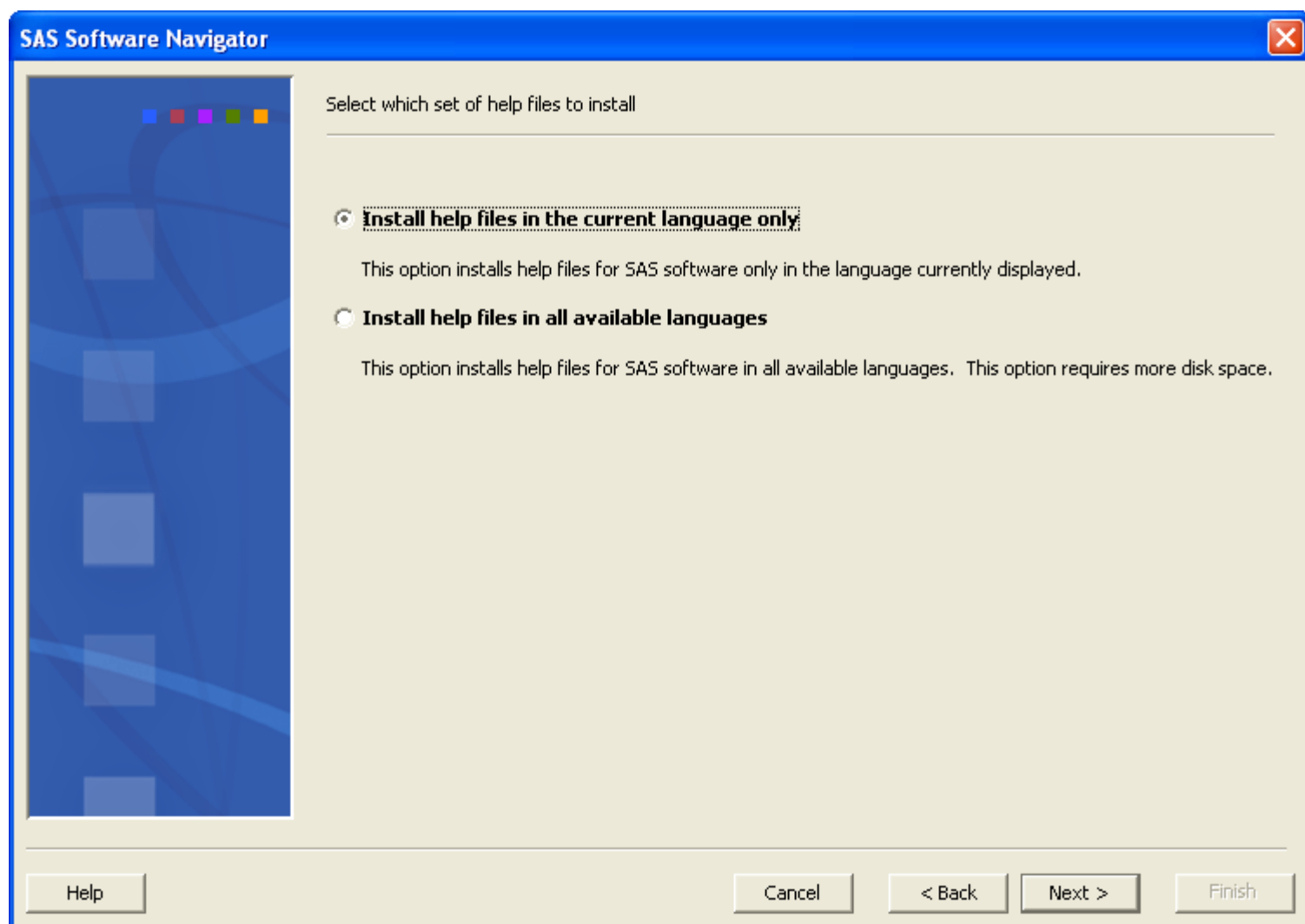
The deployment plan should be "Enterprise Miner, one machine". Please do not change it. Press "Next" to continue.



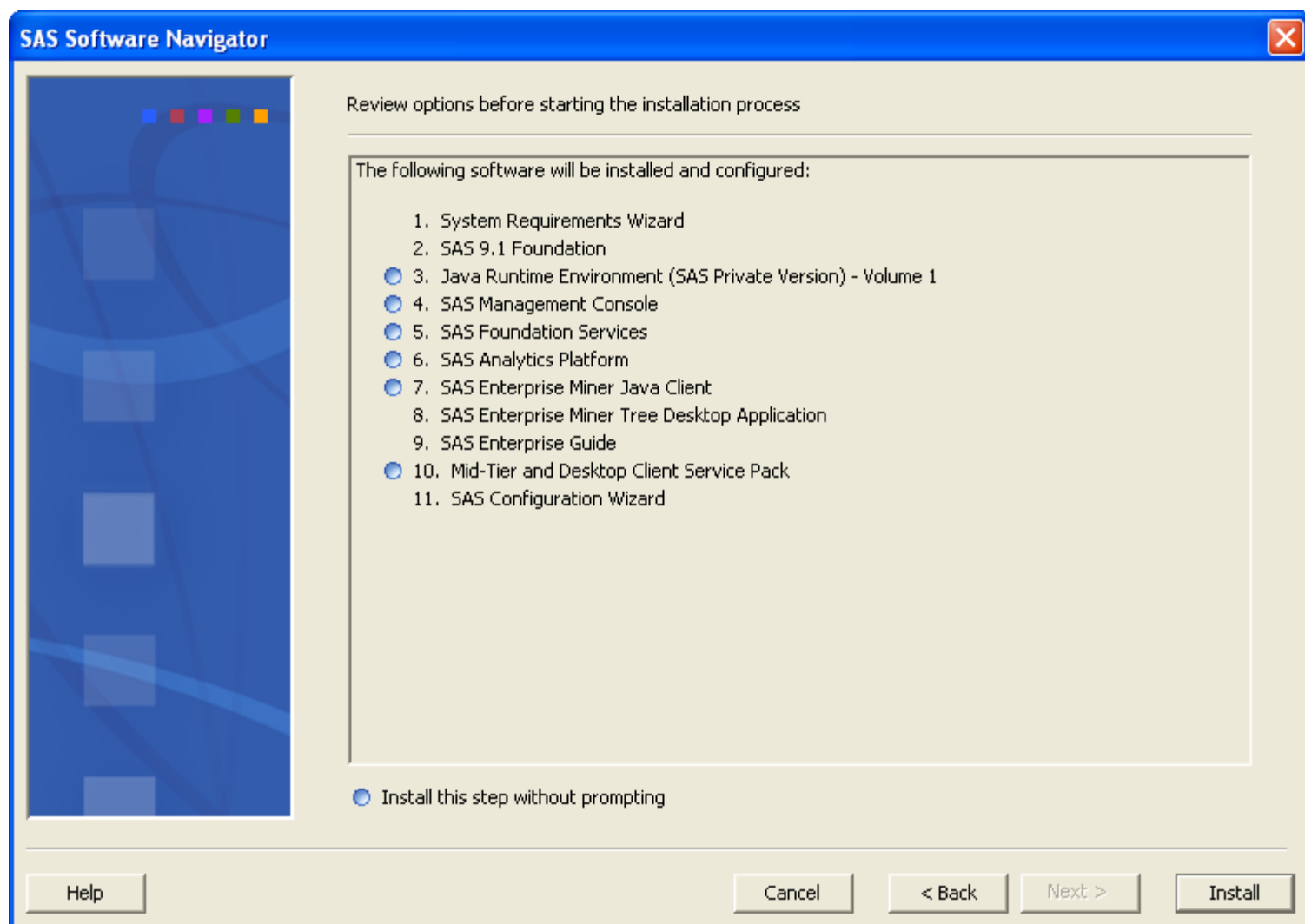
By default, all modules are selected. We recommend that you uncheck the SAS Enterprise Miner modules unless you have a need for Enterprise Miner. Installing Enterprise Miner will significantly increase install time. Press "Next" to continue.



You may select the installation path. We recommend using the system default location. Press "Next" to continue.



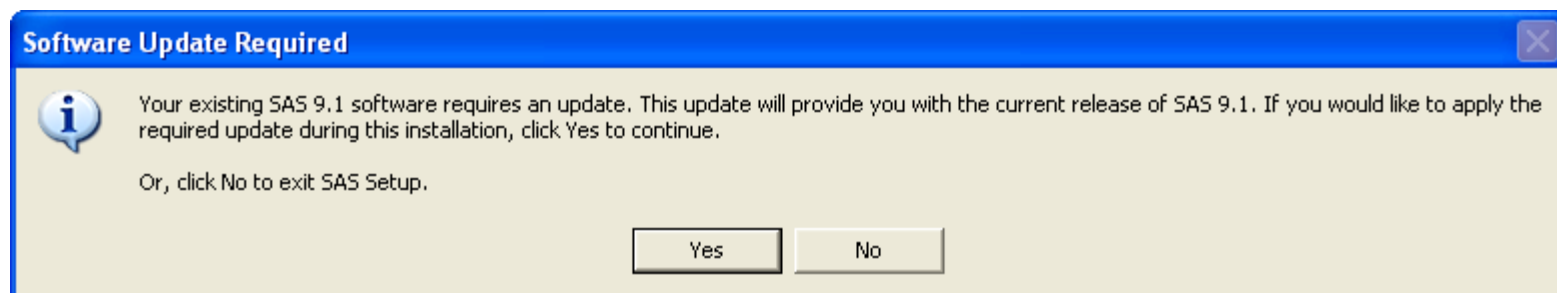
Choose the language option for the SAS help files. Press "Next" to continue.



Press "Install" to install SAS. Additional Wizards will start, just follow the prompts. Remember to restart the installer by double clicking on the "SAS Installer" icon on your desktop if the machine reboots. CLOSE THIS BROWSER WINDOW TO CONTINUE WITH THE INSTALL.

PLEASE NOTE:

An existing SAS installation may be updated with this procedure. You will see the following prompt if your existing SAS installation will be updated:



Click "Yes" to update your installation and follow the instructions listed above.