

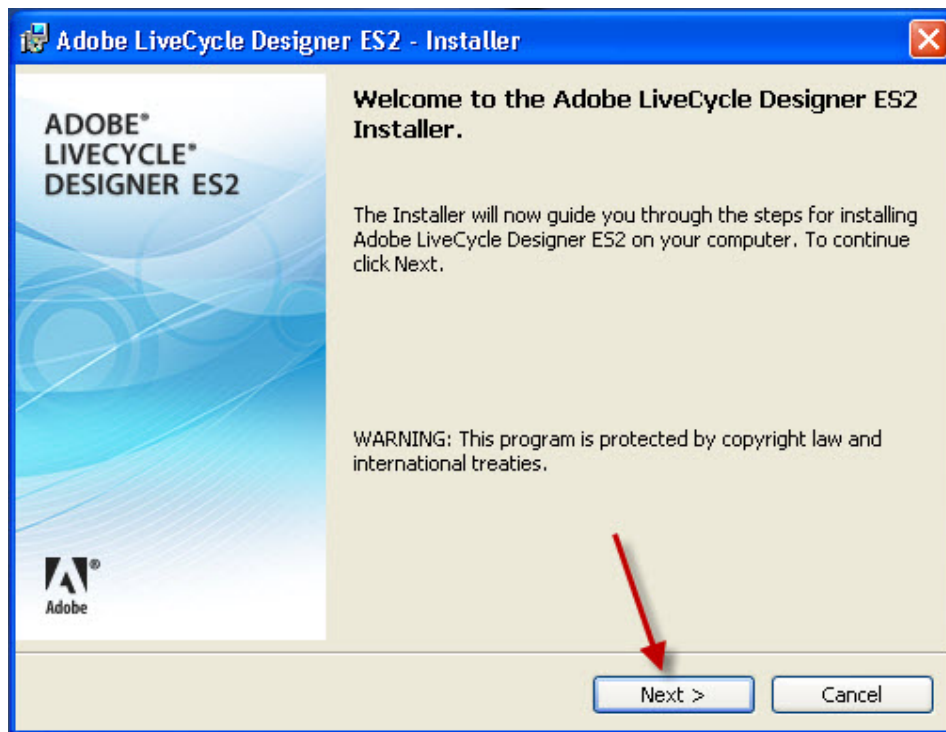
Adobe LiveCycle Designer 9.0 ES 2 Installation Instructions - Case Software Center

Check For The Installer Window Under This Browser Window

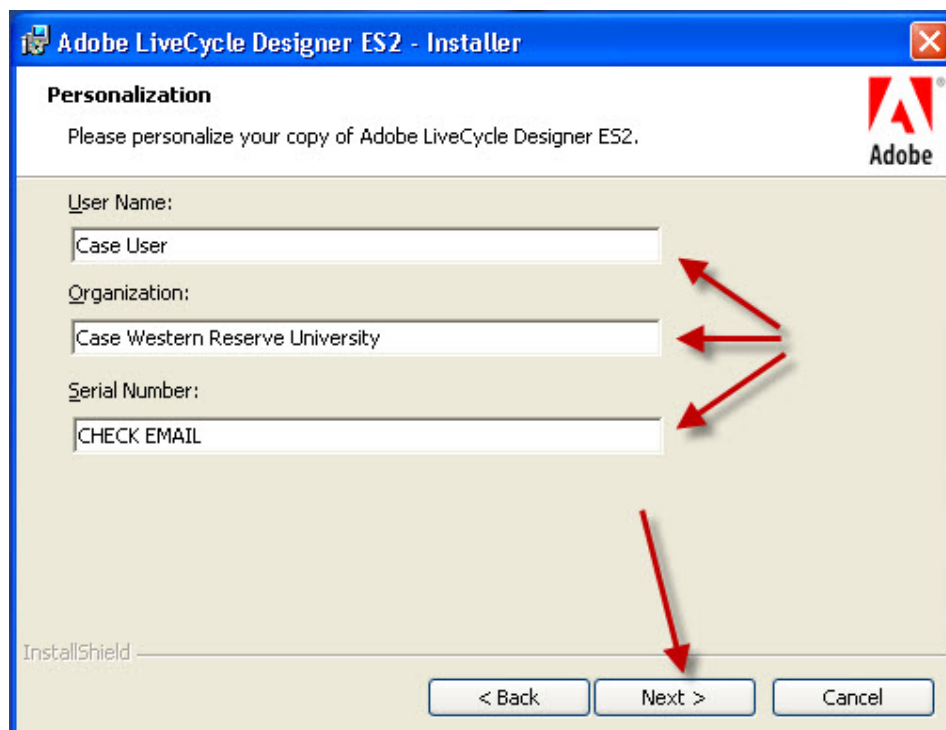
Please follow the illustrated instructions below to install Adobe LiveCycle Designer 9.0 ES 2.



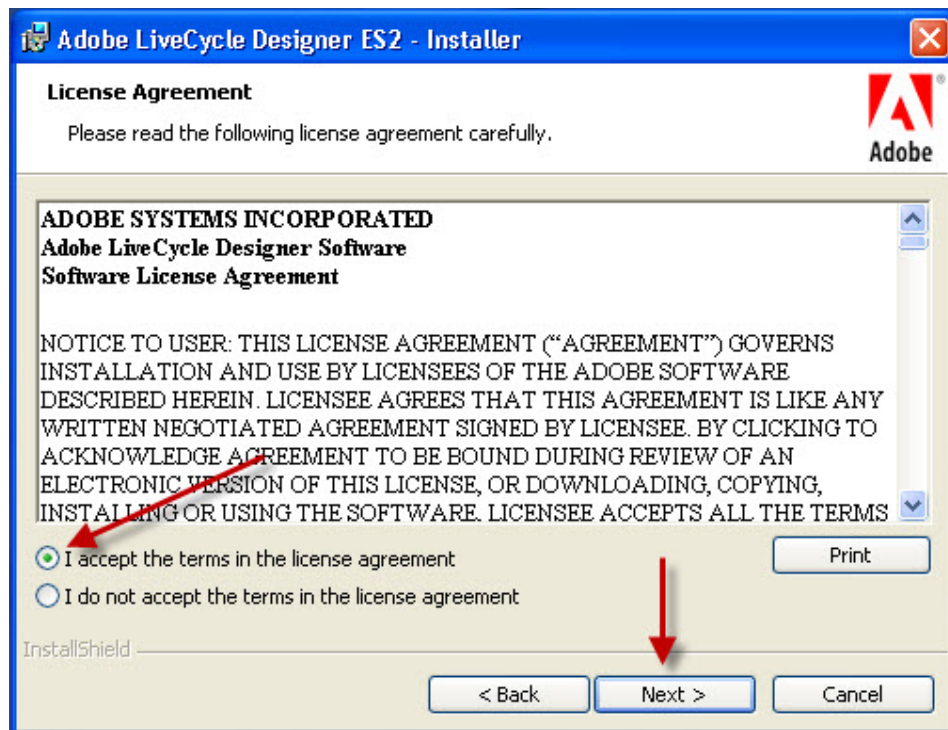
Click the "Install Adobe LiveCycle Designer ES2" button to begin your installation.



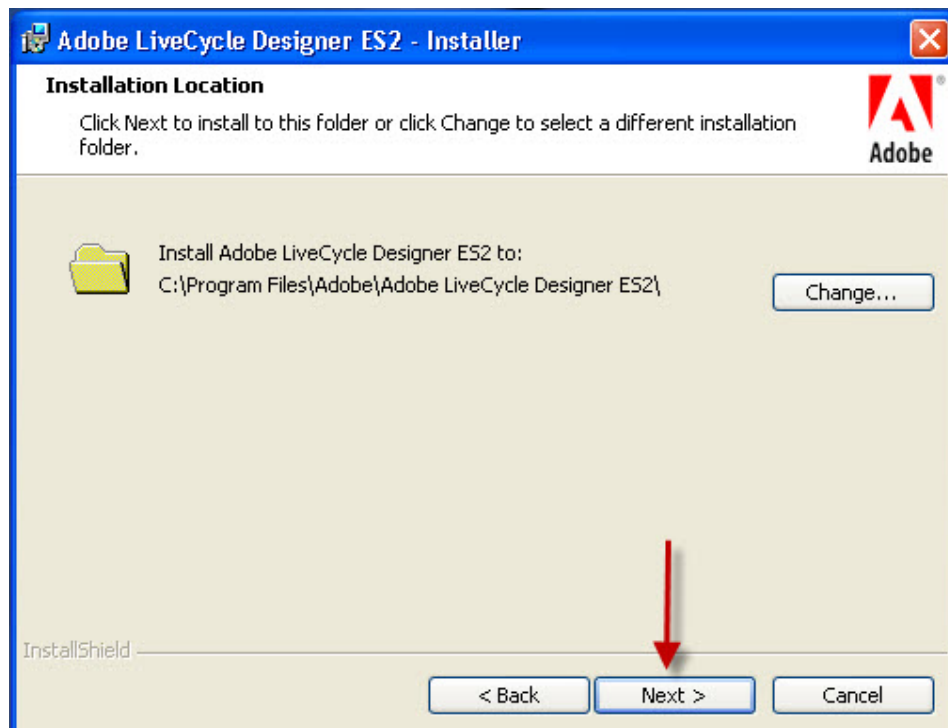
The installer has started. Press "Next >" to continue.



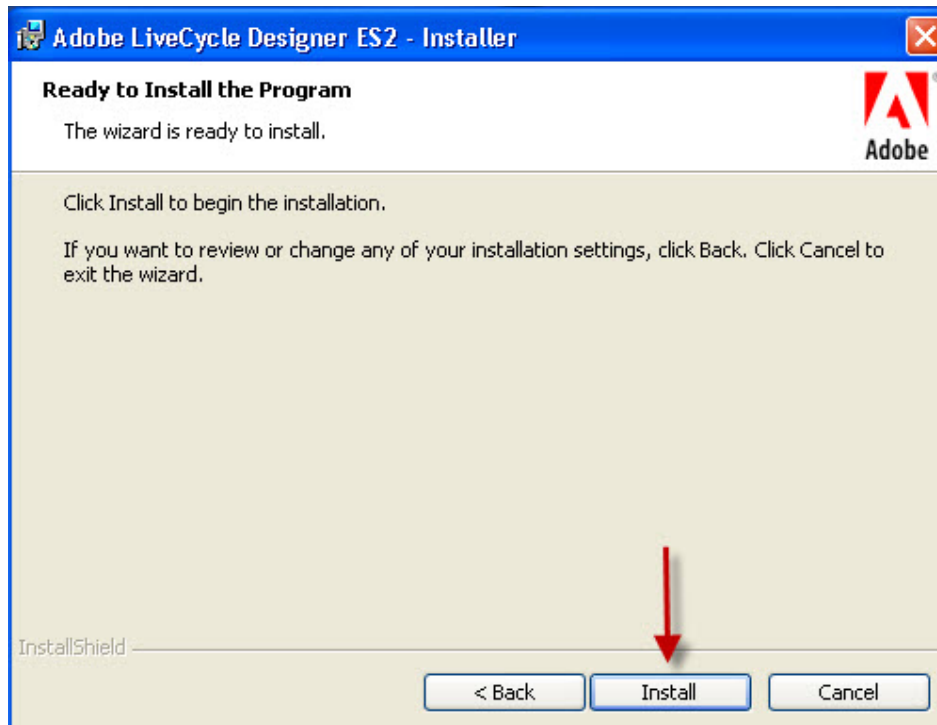
Enter the requested information. Please check your Email for a message from the Software Center containing your serial number. Press "Next >" to continue.



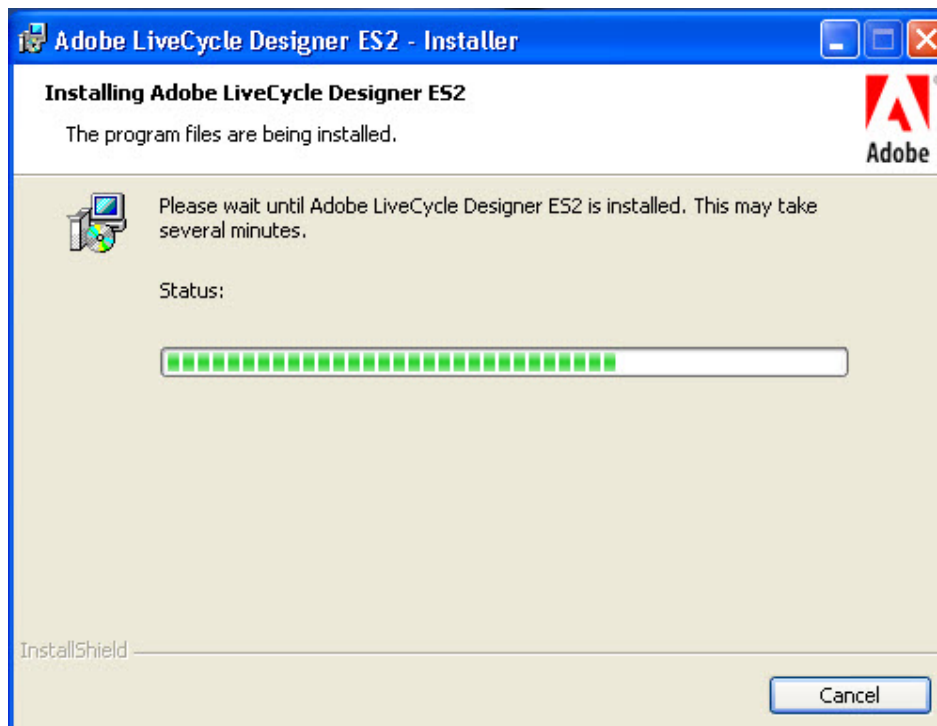
Please select "I accept" and press "Next >" to continue.



You may change the install to location, or press "Next >" to accept the default and continue.



Press "Install" to begin installation.



Installation in progress.... Please wait.



Installation is complete. Press "Finish" to exit the installer.

For help in resolving installation or activation problems, please contact the Case Help Desk at 368-HELP